

“ROFROST TURBO allows secure and rapid freezing for clean and effortless work”



Freezing

Freezing Electric

Pipe Freezing Systems

184 - 186

Freezing with Gas

Pipe Freezing Systems

187



Do you want to know more about our products? Please scan the QR-Code!



Freezing

Freezing Electric

ROFROST® TURBO 1.1/4"

Pipe freezing system for copper, steel, stainless steel and plastic composite pipes



Product Profile

APPLICATION AREA

Maintenance, repair and expansion work in sanitary and heating installations

Copper pipes: Ø 10 - 42 mm ROFROST® TURBO 1.1/4"
 Ø 3/8 - 1.3/8" ROFROST® TURBO 1.1/4"

Steel pipes: Ø 1/4 - 1.1/4" ROFROST® TURBO 1.1/4"

Plastic pipes, as well as multi-layered composite pipes

KEY FEATURES

- Safe freezing: Thermometer on the freezer clamp indicates when the pipe is completely frozen
- Reduction inserts in various sizes for all common pipe diameters
- With the flexible hose and the simple clamping system even working overhead and in confined spaces is not a problem
- The use of heat conductive paste guarantees an optimum icing. It prevents air pockets between the freezing clamps and pipe. The pipe does not need to be sprayed with water



Temperature display easy to read and rotatable

Safe, controlled freezing and monitoring

Simple and flexible use in all situations!



Compact design

Portable use, optimal for service industry

Simple clamping system

For use even in confined spaces

For pipes with Ø 10 mm - 54 mm

Reduction inserts in various sizes



Model		230 Volt 50/60 Hz
ROFROST® TURBO 1.1/4" with reduction inserts size I, II, III, V, VII, IX, XII (see ROFROST® reduction insert overview)	24.8	62200
Expansion set for ROFROST® TURBO with reduction inserts size II, III, V, VII		62230
additional sets upon request		

ROFROST® TURBO 2"

Pipe freezing system for copper, steel, stainless steel and plastic composite pipes



Product Profile

APPLICATION AREA

Maintenance, repair and expansion work in sanitary and heating installations

Copper pipes: Ø 10 - 54 mm ROFROST® TURBO 2"
 Ø 3/8 - 2.1/8" ROFROST® TURBO 2"

Steel pipes: Ø 1/4 - 2" ROFROST® TURBO 2"

Plastic pipes, as well as multi-layered composite pipes

KEY FEATURES

- Safe freezing: Thermometer on the freezer clamp indicates when the pipe is completely frozen
- Reduction inserts in various sizes for all common pipe diameters
- With the flexible hose and the simple clamping system even working overhead and in confined spaces is not a problem
- The use of heat conductive paste guarantees an optimum icing. It prevents air pockets between the freezing clamps and pipe. The pipe does not need to be sprayed with water

Space requirements for freezing clamps ROFROST® TURBO 1.1/4"

A_{min} = 27 mm
 B_{min} = 37 mm

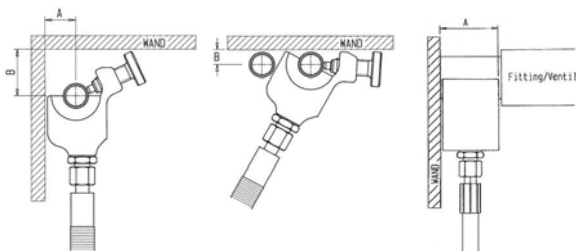
Use on vertical pipes
 in corners

B_{min} = 13 mm

Use on vertical
 pipes on walls

A_{min} = 52 mm

Use on pipes
 wall fitting / valve



Space requirements for freezing clamps ROFROST® TURBO 2"

A_{min} = 37 mm
 B_{min} = 45 mm

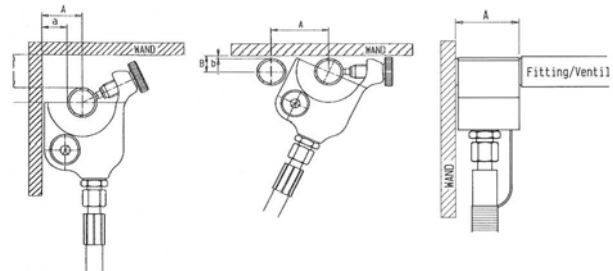
Use on vertical pipes
 in corners

B_{min} = 17 mm

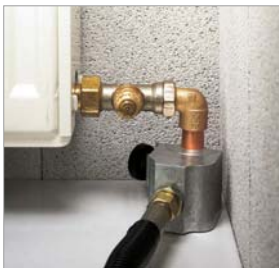
Use on vertical
 pipes on walls

A_{min} = 57 mm

Use on pipes
 wall fitting / valve



Excellent overall size for working
 close to walls or on floors



Can also be used with parallel
 running pipes and in confined
 spaces



Trouble-free use near walls,
 only 52 mm contact surface
 on pipe required



Anti-kink, diffusion proof mono-
 tube system with plastic capillary
 pipes guarantees high flexibility
 and uninterrupted operation



Model



230 Volt
 50/60 Hz

ROFROST® TURBO 2" with reduction inserts size A, E, F, G (see ROFROST® reduction insert overview)	25.6	62203
ROFROST® TURBO 2" with reduction inserts size II, III, V, VII, A, E, F, G (see ROFROST® reduction insert overview)	25.8	62206
Expansion set for ROFROST® TURBO with reduction inserts size II, III, V, VII		62230

additional sets upon request



Freezing

Freezing Electric

ROFROST® TURBO Reduction Inserts



6

ROFROST® TURBO 1.1/4"

Reduction insert Size	Nominal size Cu	Nominal size Cu	Nominal size Fe	g	No.
Size I	10 mm	3/8"	1/8"	190	62217
Size II	12 mm	1/2"	-	180	62211
Size III	14/15 mm	-	1/4"	170	62212
Size IV	16 mm	5/8"	-	170	62219
Size V	18 mm	-	3/8"	165	62213
Size VI	20 mm	3/4"	-	155	62224
Size VII	22 mm	7/8"	1/2"	145	62214
Size VIII	-	1"	-	125	62226
Size IX	28 mm	-	3/4"	110	62215
Size X	-	1.1/8"	-	90	62227
Size XI	32 mm	1.1/4"	-	80	62221
Size XII	35 mm	1.3/8"	1"	65	62216

ROFROST® TURBO 2"

Reduction insert Size	Nominal size Cu	Nominal size Cu	Nominal size Fe	g	No.
Size A	28 mm	-	3/4"	190	62231
Size B	-	1.1/8"	-	180	62232
Size C	32 mm	1.1/4"	-	170	62233
Size D	35 mm	1.3/8"	1"	170	62234
Size E	42 mm	-	1.1/4"	165	62235
Size F	-	-	1.1/2"	155	62236
Size G	54 mm	2.1/8"	-	145	62237

The reduction insert size E, 42 mm serves as an adaptor piece for fitting ROFROST® TURBO 1.1/4" reduction inserts size I – size XII

ROFROST® Heat Conductive Paste

Heat conductive paste enables fully automatic freezing without spraying!



No. 62291

For a perfect freezing result



Description	g	g	No.
ROFROST® Heat Conductive Paste	150 ml	130	1 62291

ROFROST® Dry Ice Set

Freezing unit for the freezing of pipes up to 2" without electricity

Product Profile

APPLICATION AREA

Maintenance, repair and expansion work in sanitary and heating installation. No electrical connection required!

KEY FEATURES

- Flexible use, freezing possible without electricity!
- Because of the low temperature (up to -79° C) the dry ice enables a faster freezing as every other electrical freezing unit that uses refrigerant
- Piping up to 2" can be frozen with just one unit
- Freezer heads made out of extremely cold-resistant special plastic

TECHNICAL DATA

Copper pipes: Ø 10 mm - 60 mm
Ø 1/2 - 2.1/8"

Steel pipes: Ø 1/8 - 2"

Plastic pipes, as well as plastic composite pipes

19-part set (No. 65030) includes: 2 handles with feed valves (No. 65032), 2 high pressure hoses (No. 65033), 10 pairs of freezer heads (2 for each pipe dimension), stopper for one-sided freezing (No. 65049), wrench (No. 65045), internal hexagonal screwdriver (No. 65046), T-piece (65034), Plastic carrying case (65031)

for Copper pipes		for Steel pipes		kg	No.
Ø mm	Ø inch	Ø inch	Ø inch		
10 - 60	1/2 - 2.1/8"	1/8 - 2"		4.9	65030

ROFROST® Freezer Heads

Size	for Copper pipes		for Steel pipes		g	No.
	Ø mm	Ø inch	Ø inch	Ø inch		
1	10 - 12	1/2"	1/8"	60	65035	
2	14 - 15	-	1/4"	60	65036	
3	16 - 18	5/8"	3/8"	70	65037	
4	22	3/4 - 7/8"	1/2"	70	65038	
5	28	1.1/8"	3/4"	110	65039	

Set without carbon dioxide bottles!



Use carbon dioxide bottles only with stand pipes



Freezer Heads



Size	for Copper pipes		for Steel pipes		g	No.
	Ø mm	Ø inch	Ø inch	Ø inch		
6	35	1.3/8"	1"	110	65040	
7	42	1.5/8"	1.1/4"	210	65041	
8	-	-	1.1/2"	210	65042	
9	54	2.1/8"	-	250	65043	
10	60	-	2"	250	65044	

ROFROST® Handy

The fast, portable freezing system for copper pipes Ø 15 - 28 mm and steel pipes 1/4 - 3/4"

Product Profile

APPLICATION AREA

Pipe freezing system is ideally for quick repairs and small expansion tasks

KEY FEATURES

- Freezing is possible in the smallest spaces
- Space saving case

10-part set (No. 64020) includes: Quick Freeze freezing spray (No. 64001), Freezing head 1/4" (No. 64021), Freezing head 3/8" (No. 64022) Freezing head 1/2" (No.64023) Freezing head 3/4" (No. 64024), internal hexagonal screwdriver (No. 65046), Foam inlay (No. 64026), Plastic carrying case without inlay (No. 30898), Inlay for plastic carrying case (No. 62045), ROTHENBERGER fleece cloth (No. 93915)



Model	g	No.
ROFROST® Handy	2,400	64020
Quick Freeze Freezing Spray	500	64001