



"The fully equipped drilling system RODIACUT® 170 PRO C in use with water removal and vacuum equipment, particularly suitable for use in dirt-sensitive rooms"



# RODIA®

## Diamond Core Drilling



<b>System Overview Diamond Core Drilling</b>	32
<b>Hand-Operated Drilling</b>	
Dry Drilling Machine	33
Wet Drilling Machine	34
<b>Hand-Operated and Stationary Wet Drilling</b>	
Wet Drilling Machine	35
RODIACUT® PRO Modular System	36
Diamond Wet & Dry Drilling Systems RODIACUT® PRO	37 - 43
<b>RODIA® Diamond Drill Bits</b>	
Drill Bit Types	44
Dry Cutting Drill Bit, Soldered	45
Dry Cutting Drill Bit, Space Welding	46 - 48
<b>Accessories for Hand-Operated &amp; Stationary Drilling</b>	
Drill Bit Set, Vacuum Pump System	49
Accessories Diamond Drilling	50 - 52
<b>Extraction Systems</b>	
Wet & Dry Extraction Unit	53



Do you want to know more about our products? Please scan the QR-Code!

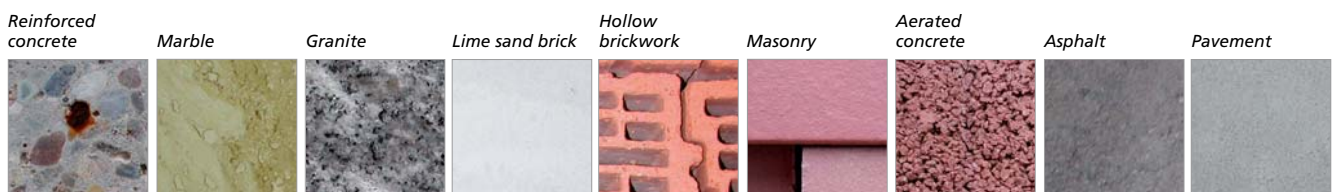
# RODIA® Diamond Core Drilling

## System Overview Diamond Core Drilling



ROTHENBERGER Diamond Core Drilling						
	RODIADRILL Ceramic / Ceramic ECO	RODIADRILL 1800 DRY	RODIACUT® 130 PRO	RODIACUT® 170 PRO	RODIACUT® 270 PRO	RODIACUT® 400 PRO D
<b>Drilling range in concrete</b>	6 - 35 mm	-	10 - 162 mm	10 - 172 mm	32 - 250 mm	32 - 400 mm w/ distance plate 500mm
<b>Drilling range in masonry</b>	6 - 67 mm	32 - 200 mm	32 - 200 mm	32 - 200 mm	32 - 250 mm	32 - 400 mm w/ distance plate 500mm
<b>Distance to wall</b>	30 mm	40 mm	40 mm	40 mm	50 mm	50 mm
<b>Stationary</b>	- / 67 mm	32 - 172 mm	10 - 162 mm	10 - 172 mm	32 - 250 mm	32 - 400 (500) mm
<b>Watt output</b>	800 W	1,800 W	1,400 W	1,800 W	2,400 W	3,000 W
<b>Weight</b>	3.4 / 3.2 kg	5.8 kg	13.9 kg	20.1 kg	25.8 kg	40.5 kg
<b>Special features</b>	Wide area of use, extremely light machine, especially for hard natural stone / tiles	Soft PULSE can be turned on / off. Integrated extraction rotor	4 functions with just one device. Leveling in drilling stand	4 functions with just one device. Fully equipped drill stand	Motor quick release system. Fully equipped drill stand	Innovative motor electronics, extremely high torque
	<b>34, 35</b>	<b>33</b>	<b>37</b>	<b>38, 39</b>	<b>40, 41</b>	<b>42, 43</b>

ROTHENBERGER Diamond Drilling Technology			
	High Speed Plus Natural Stone	DX-High Speed Plus / DURAMANT PRO	SPEED STAR DX
<b>Application Area</b>	Wet drill bit	Wet and dry drill bit	Wet and dry drill bit
<b>Socket threads</b>	G 1/2"	G 1/2" + 1.1/4" UNC	G 1/2" + 1.1/4" UNC
<b>Effective length</b>	50 / 120 / 300	400, 500 / 300, 430	400 / 500
<b>Segment mount</b>	Soldered	Space welding	Space welding
<b>Segment form</b>	Flat segment	PRISMACUT	PRISMACUT
<b>Material</b>	Reinforced concrete, marble granite, hollow brickwork, masonry, clinker	Reinforced concrete, concrete, marble, granite, lime sand brick, hollow brickwork, masonry, aerated concrete, clinker	Reinforced concrete, concrete asphalt*, pavement* <small>*custom made on request</small>
	<b>45</b>	<b>46, 48</b>	<b>47</b>



# RODIA® Diamond Core Drilling

## Hand-Operated Drilling

### RODIADRILL 1800 DRY

Hand-operated dry drilling, drill Ø 32 - 200 mm



#### Product Profile

#### APPLICATION AREA

Hand-operated dry drilling, optimal for drilling in lime sand brick, masonry, brickwork, pumice, aerated concrete  
Ideal for use in the HVAC&R, plumbing and electrical industries, in enclosed rooms or in inhabited buildings where jolt and dust free operation is required

#### KEY FEATURES

- Efficient drilling with the help of the POWER PULSE technology
- Optimum drilling results with the powerful extraction rotor
- Electronic friction clutch with 20 Nm torque
- Safe operation with the electronic soft start with overload indicator
- Better operating position, directly against the wall, small compact design

#### KEY FEATURES

- Operation possible with RODIACUT® 170 Pro (FF30171, FF30170 (130 PRO (No. 100000088)) possible
- Clamping adaptor Ø 56 mm

#### TECHNICAL DATA

<b>Transmission:</b>	1 speed transmission
<b>Nominal speed:</b>	1150 rpm
<b>Drilling range in mm:</b>	Ø 32 - 200
<b>Voltage:</b>	230 V
<b>Rated input/output:</b>	2,500 Watt / 1,800 Watt
<b>Charging rate:</b>	8.5 A
<b>Minimum distance to wall:</b>	40 mm from drill hole centre
<b>Minimum distance to corner:</b>	40 mm from drill hole centre
<b>Weight:</b>	5.8 kg



**Lightweight:  
5.8 kg!**

Dust free use



4-part set (No. FF40185) includes: Drill motor RODIADRILL 1800 DRY incl. transport case (No. FF60185), spanner size 24 and size 36 (No. FF70024 / No. FF70036)

Model	kg	No.
RODIADRILL 1800 DRY set	5.80	FF40185

#### ACCESSORIES



Description	kg	No.	Description	kg	No.
Centering pin as drill support, 300 mm	0.33	FF03300	Socket drill bit Ø 68 mm	0.20	FF03168
Centering pin as drill support, 400 mm	0.35	FF03301	Socket drill bit Ø 82 mm	0.30	FF03182
Centering tip "Quick Out" I. V. M. FF35097	0.10	FF35096	Dry cleaner RODIA DC 1200	10.80	FF35148
Adaptor G 1/2" for M16	0.10	FF35097	Transport case RODIADRILL 1800 DRY	4.40	FF60185

Drill bits 44, 45, 46, 47, 48

# RODIA® Diamond Core Drilling

## Hand-Operated Drilling

### RODIADRILL Ceramic RODIADRILL Ceramic ECO



2

#### Hand-operated wet drilling, drill Ø 6 - 67 mm

Ideally suited for HVAC&R, plumbing professionals, tilers, stair builders, remodelling specialists as well as electricians.

Everywhere where jolt-free operation is necessary and extremely hard materials need to be processed.

#### Product Profile

##### APPLICATION AREA

**Hand-operated wet drilling in:**  
(reinforced) concrete Ø 6 - 35 mm, marble, granite, ceramic tiles, masonry, hollow brickwork and glass Ø 6 - 67 mm

##### KEY FEATURES

- For all common G 1/2" drill bits
- Fatigue-free operation with the light weight
- Also drills through material combinations (for example tiles + masonry) without damaging material or surfaces and without cumbersome tool change
- "Aqua-Stop Button" with quantity adjustment
- Ideal for serial drilling with the external water supply
- Toolless exchange of the drill bits with the Quick Change system
- Integrated 1 litre water tank for 4-6 drill holes

##### TECHNICAL DATA

<b>2-speed transmission:</b>	1. Gear speed	2. Gear speed
<b>Nominal speed:</b>	3,600 rpm	6,400 rpm
<b>Drilling range in mm:</b>	Ø 25 - 67	Ø 6 - 25
<b>Voltage:</b>	230 V	
<b>Rated input/output:</b>	1,150 Watt / 800 Watt	
<b>Charging rate:</b>	3.6 A	
<b>Maximum drilling depth:</b>	400 mm (depending on material)	
<b>Minimum distance to wall:</b>	30 mm from drill hole centre	
<b>Minimum distance to corner:</b>	30 mm from drill hole centre	
<b>Weight</b>	3.4 kg Ceramic	3.2 kg Ceramic ECO
<b>Stationary:</b>	Ø 67 mm (Ceramic ECO)*	

\*Only in tiles! Otherwise max. 35 mm in concrete.

#### Integrated 1 litre water tank

Sufficient supply for 4 - 6 drill holes and can be rotated when working in confined spaces

#### Quick Change System drill bit adaptor

Toolless quick change for G 1/2" drill bits



#### Connection for external water supply

Ideal solution for serial drillings

#### "Aqua-Stop Button" – water pressure valve with quantity adjustment

Perfectly regulated flow of the water quantity



You will find special drill bits for RODIADRILL Ceramic on page 45!

Clean drilling of tiles



Drilling of the hardest materials



7-part set (No. FF40150) includes: Drill motor RODIADRILL Ceramic (No. FF40150P), 1 high speed plus drill bit each Ø 6 - 8 - 10 mm (No. FF44806, FF44808, FF44810), spanners sizes 24 and 27 (No. FF70024, FF70027), transport case (No. FF60150)

Model	kg	No.
RODIADRILL Ceramic set	3.4	FF40150

# RODIA® Diamond Core Drilling

## Hand-Operated and Stationary Wet Drilling

### RODIADRILL Ceramic ECO

Hand-operated and stationary wet drilling machine, drill Ø 6 - 67 mm

- Further developed for hand-operated and stationary wet drilling in the smallest drilling range
- Drills in all the hardest materials such as tile, natural stone, concrete, glass and ceramic
- Especially recommended for high-quality bathroom installations without damaging surface materials
- Water extraction is possible with the stand guided drill



With drill stand (No. FF30170 + FF30171), 1000000088 stationary drilling is possible!

Quick Change System drill bit adaptor

Toolless quick change for drill bits G 1/2"

Please pay attention to special characteristics / advantages on page 34!



Ø 56 mm clamping adaptor

For stationary drilling

Integrated water flow socket with Aqua-stop and adjustable water tap

Ideal solution for serial drillings

You will find special drill bits for RODIADRILL Ceramic on page 45!

#### Quick change adaptor



Set (No. FF40140) includes: Drill motor RODIADRILL Ceramic ECO (No. FF40140), spanner sizes 24 and 27 (No. FF70024, FF70027), Quick change adaptor G 1/2", (No. FF35751), transport case (No. FF60150)

#### Drill bits HSP natural stone



#### Stationary drilling



Model	kg	No.
RODIADRILL Ceramic ECO set	3.2	<b>FF40140</b>
RODIACUT® drill stand 170 PRO	10.0	<b>FF30171</b>

Model	kg	No.
Quick change adaptor G 1/2"	0.2	<b>FF35751</b>
Pressurized water container 10 l	5.5	<b>FF35026</b>

### ACCESSORIES



Description	kg	No.	Description	kg	No.
Freehand drill support up to Ø 83 mm	0.45	<b>FF35750</b>	Water supply hose with "aqua-stop"	0.20	<b>FF35302</b>
Quick change adaptor	0.20	<b>FF35751</b>	Water collection ring, hand-operated	0.80	<b>FF35701</b>
Pressurized water container 10 l	5.50	<b>FF35026</b>	Water collection ring, stationary	1.20	<b>FF35700</b>
Special water supply hose	0.20	<b>FF35301</b>	Transport case RODIADRILL Ceramic ECO	4.80	<b>FF60150</b>

Drill Bit High-Speed-Plus Natural Stone 45

# RODIA® Diamond Core Drilling

## Hand-Operated and Stationary Drilling

### Drill Stands

### Feed Units

### Drill Motors

### Diamond Drilling System

130 PRO



37

RC 130 PRO



37

Ceramic ECO



35

RODIACUT® 130 PRO



37

170 PRO C/D



38, 39

RC 170 PRO



38, 39

1400/1800 DWS



37

RODIACUT® 170 PRO C / PRO D



38, 39

270 PRO C/D



40, 41

RC 270 PRO



40, 41

1800 DRY



33

RODIACUT® 270 PRO C / PRO D



40, 41

400 PRO D



42, 43

RC 400 PRO



42, 43

2400 PD-E



40, 41

RODIACUT® 400 PRO D



42, 43

3000 PD



42, 43

2



# RODIA® Diamond Core Drilling

## Hand-Operated and Stationary Drilling

### RODIACUT® 130 PRO

Drilling system with dowel plate, drill Ø 10 - 200 mm

Ideal for use in HVAC&R, plumbing and electrical industries, as well as the entire building industry where jolt and dust-free operation is required.



Ø 200

2



#### Product Profile

##### APPLICATION AREA

Stationary wet drilling in (reinforced) concrete	Ø 10 - 162 mm
Stationary dry drilling in masonry	Ø 32 - 162 mm
Hand-operated wet drilling in (reinforced) concrete	Ø 10 - 82 mm
Hand-operated dry drilling in masonry	Ø 32 - 200 mm

##### KEY FEATURES

- Low vibration drilling with the 4x roll guides
- Stainless-steel handle can be exchanged without tools
- Exchangeable rack and guide rail
- Stable threaded connection between column and base plate
- Transport handle
- Lockable feed unit
- Universal feed unit, also with RODIACUT® 170, 270 and 400 Pro
- Ø 60 mm clamping neck adaptor

#### TECHNICAL DATA (DRILL MOTOR)

<b>Drill motor:</b>	RODIADRILL 1400 DWS
<b>Drilling range:</b>	in concrete max. Ø 132 mm in brickwork Ø 162 mm
<b>Min. distance to wall:</b>	40 mm from drill hole centre
<b>Min. distance to corner:</b>	40 mm from drill hole centre
<b>Threaded adaptor:</b>	G 1/2" and 1.1/4" UNC
<b>Rated input / output:</b>	2,000 Watt / 1,400 Watt
<b>2-speed transmission:</b>	1. Gear      2. Gear
<b>Nominal speed:</b>	500 rpm      1,050 rpm
<b>Torque:</b>	55 - 27 Nm
<b>Charging rate:</b>	8.5 A
<b>Weight:</b>	Motor 6.7 kg
<b>Clamping neck:</b>	Ø 60 mm

Ideal for difficult spaces



Dowel plate: Extremely small dimensions, for very tight spaces



Circular level: Quick and precise alignment of the drill stands



Threaded adaptor:  
G 1/2" and 1.1/4" UNC!

#### Feed unit and 4x guide rollers

Universal use with RODIACUT® 170, 270 and 400 PRO

#### Stainless-steel handle

Quick, toolless exchange of the operational side, sturdy design



Scope of Delivery (No. 100000089): Drill stand RODIACUT® 130 PRO, drill motor RODIADRILL 1800 DWS, spanner size 19/24/36/41, water supply hose (No. FF35302), complete concrete set (No. FF35120), copper ring 1.1/4" (No. FF35190), instruction manual RODIADRILL 1800 DWS (No. 90704), instruction manual RODIACUT® 130 PRO (No. 1300000155), tool bag (No. FF70001)

Model	kg	No.
RODIACUT® 130 PRO set with RODIADRILL drill motor 1800 DWS	14.2	1000000089
RODIACUT® 130 PRO set with RODIADRILL drill motor 1400 DWS	14.1	1000000092
Drill stand RODIACUT® 130 PRO	7.2	1000000088
RODIADRILL drill motor 1400 DWS	6.7	FF40160

Drill bits on 44



# RODIA® Diamond Core Drilling

## Hand-Operated and Stationary Drilling

### RODIACUT® 170 PRO C / 170 PRO D

Drilling system with dowel- or vacuum combination plate, drill Ø 10 - 200 mm



2



#### Product Profile

##### APPLICATION AREA

##### 4 Applications with just one unit:

Stationary wet drilling in (reinforced) concrete	Ø 10 - 172 mm
Stationary dry drilling in masonry	Ø 32 - 172 mm
Hand-operated wet drilling in (reinforced) concrete	Ø 10 - 82 mm
Hand-operated dry drilling in masonry	Ø 32 - 200 mm

##### KEY FEATURES

- Universal feed unit, can also be used with RODIACUT® 270 PRO and 400 PRO with the 4x guide rolls
- Drill angle adjustment from -15° up to +45°, in 2.5° adjustable steps
- Quick display of the drill hole centre (only with combination plate)

##### TECHNICAL DATA (DRILL STANDS)

<b>Drilling range:</b>	w/o water collection ring: max. Ø 172 mm with water collection ring: max. Ø 132 mm	
<b>Drill motor adaptor:</b>	Ø 60 mm	
	<b>170 PRO C</b>	<b>170 PRO D</b>
<b>Length</b>	470 mm	315 mm
<b>Width:</b>	300 mm	180 mm
<b>Height:</b>	860 mm	860 mm
<b>Hub:</b>	525 mm	525 mm
<b>Weight:</b>	13.1 kg	12.8 kg

##### TECHNICAL DATA (DRILL MOTOR)

<b>Drill motor:</b>	RODIADRILL 1800 DWS
<b>Drilling range:</b>	in concrete max. Ø 172 mm in masonry max. Ø 200 mm
<b>Freehand:</b>	
<b>Min. distance to wall:</b>	40 mm from drill hole centre
<b>Min. distance to corner:</b>	40 mm from drill hole centre
<b>Threaded adaptor:</b>	G 1/2" and 1.1/4" UNC
<b>Rated input/output:</b>	2,500 Watt / 1,800 Watt
<b>2 speed transmission:</b>	760 - 1,570 rpm
<b>Torque:</b>	58 - 27 Nm
<b>Charging rate:</b>	8.5 A
<b>Weight:</b>	7.0 kg
<b>Clamping neck:</b>	Ø 60 mm

#### Sliding carriage on all RODIACUT® PRO drill stands and columns

Stable and low-vibration operation, flexible use / modular design

#### Rubber transport wheels

Quick and easy transport on the building site (standard with combination plate)

#### With integrated vacuum plate / valve and 4 adjustable screws to level out unevenness

High-quality drill base

#### Drill angle adjustment

Adjustable from -15° up to +45° in 2.5° steps

#### Drill hole centre indicator

Quick adjustment for an exact drilling position



# RODIA® Diamond Core Drilling

## Hand-Operated and Stationary Drilling

### CHARACTERISTICS 170 PRO C and 170 PRO D

#### Available with both drill stands:

- Precise and vibration free drilling with the 4x roll guides
- Stainless steel handle, can be changed without tools
- Exchangeable rack and guide rail
- Stable threaded connection between column and base plate
- Transport handle
- Lockable feed unit
- Drill depth measuring scale
- Ø 60 mm clamping neck adaptor

### ADDITIONAL CHARACTERISTICS 170 PRO C

- Second transport handle
- Transport wheels
- Vacuum plate
- Drill hole centre indicator
- Vacuum valve



Clean work in enclosed rooms

#### Stainless steel handle

Toolless quick change for the operating side, sturdy design

#### Feed unit and 4x roll guides

Universally applicable on RODIACUT® 130, 270 PRO and 400 PRO



Fig. 170 PRO C

Fig. 170 PRO D

Scope of delivery (No. FF34171 / FF34170): Drill stand RODIACUT® 170 PRO C or 170 PRO D, drill motor RODIADRILL 1800 DWS, spanner sizes 19/24/36/41, Allen key 6 mm, water supply hose (No. FF35302), concrete set, complete (No. FF35120), copper ring 1.1/4" (No. FF35190), Instruction manuals: RODIADRILL 1800 DWS (No. 90704), RODIACUT® 170 - 400 (No. 90726), tool bag (No. FF70001)

Model	kg	No.
RODIACUT® 170 PRO C complete	20.1	<b>FF34171</b>
RODIACUT® 170 PRO D complete	19.8	<b>FF34170</b>
RODIADRILL 1800 DWS	7.0	<b>FF40180</b>
Drill column RODIACUT® 170 PRO C	13.1	<b>FF30171</b>
Drill column RODIACUT® 170 PRO D	12.8	<b>FF30170</b>
Drill column 860 mm, Hub 525 mm	7.6	<b>FF50978</b>
Drill column 1335 mm, Hub 1000 mm	12.4	<b>FF50981</b>
Drill column 1835 mm, Hub 1500 mm	16.5	<b>FF50982</b>
Feed unit for RC 170 PRO	3.1	<b>FF50977</b>
Anchor foot for RC 170 PRO	3.3	<b>FF50979</b>

### ACCESSORIES



Description	No.	Description	No.
RODIADRILL CERAMIC ECO	<b>35 FF40150</b>	RODIA DRY CLEANER 1200	<b>53 FF35148</b>
RODIADRILL 1800 DRY	<b>33 FF40185</b>	Water collection ring, hand-operated	<b>52 FF35701</b>
Pressurized water container 10 l	<b>51 FF35026</b>	Water collection ring, stationary (for FF30171)	<b>52 FF35700</b>
Vacuum pump RODIA-VAC	<b>49 FF35200</b>	Drill bits	<b>44 - 48</b>

# RODIA® Diamond Core Drilling

## Stationary Drilling

### RODIACUT® 270 PRO C / 270 PRO D

Drill stand with dowel- or vacuum combination plate drill Ø 32 - 250 mm



#### Product Profile

##### APPLICATION AREA

###### 2 applications in one unit:

Stationary wet drilling in (reinforced) concrete Ø 32 - 250 mm  
Stationary dry drilling in masonry Ø 32 - 250 mm

##### KEY FEATURES

- Universal feed unit, can also be used with RODIACUT® 130, 170 PRO und 400 PRO
- Drill angle adjustment from -15° up to +45°, in 2.5° adjustable steps
- Drill hole centre indicator (270 PRO C) for quick alignment

##### TECHNICAL DATA (DRILL STANDS)

<b>Drilling range:</b>	w/o water collection ring: max. Ø 250 mm with water collection ring max. Ø 220 mm	
<b>Drill motor adaptor:</b>	Direct adaptor for feed unit	
	<b>270 PRO C</b>	<b>270 PRO D</b>
<b>Length:</b>	520 mm	330 mm
<b>Width:</b>	330 mm	220 mm
<b>Height:</b>	980 mm	980 mm
<b>Hub:</b>	595 mm	595 mm
<b>Weight:</b>	16.8 kg	16.5 kg

##### TECHNICAL DATA (DRILL MOTOR)

<b>Drill motor:</b>	RODIADRILL 2400 PD-E
<b>Drilling range:</b>	in concrete max. Ø 250 mm in masonry max. Ø 250 mm
<b>Min. distance to wall:</b>	50 mm from drill hole centre
<b>Min. distance to corner:</b>	50 mm from drill hole centre
<b>Threaded adaptor:</b>	G 1/2" and 1.1/4" UNC
<b>Rated input/output:</b>	3,000 Watt / 2,400 Watt
<b>3 speed transmission:</b>	300 - 600 - 1,120 rpm
<b>Torque:</b>	95 - 47 - 23 Nm
<b>Charging rate:</b>	14.9 A
<b>Weight:</b>	9.0 kg



**4x roll guides**  
Precise and low vibration operation, flexible use / module concept

**Sliding carriage can be used on all RODIACUT® PRO drill stands and columns**  
Toolless quick mounting/demounting of drill motor on drill stand

**Rubber transport wheels**  
Quick and easy transport on the building site

**With integrated vacuum plate / valve and 4 adjustable screws to level out unevenness**  
High-quality drill base



**Drill angle adjustment**  
Adjustable from -15° up to +45° in 2.5° steps



**Drill hole centre indicator**  
Fast alignment of the drill hole centre

### CHARACTERISTICS 270 PRO C AND 270 PRO D

#### Standard with both drill stands:

- 4x roll guides for precise and low-vibration drilling
- Stainless steel handle, can be changed without tools
- Exchangeable rack and guide rail
- Stable threaded connection between column and base plate
- Transport handle
- Lockable feed unit
- Drill depth measuring scale

### ADDITIONAL CHARACTERISTICS 270 PRO C

- Second handle
- Vacuum plate
- Vacuum valve
- Drill hole centre indicator

#### Stainless steel handle

Toolless quick change for the operating side, sturdy design



Fig. 270 PRO C

Fig. 270 PRO D

#### Feed unit

Universally applicable on RODIACUT® 170 PRO and 400 PRO



Fig. Shows drill stand RODIACUT® 270 Pro C with feed unit RC 400 and drill motor RODIADRILL 3000 PD

Scope of delivery (No. FF34271 / FF34270): drill stand RODIACUT® 270 PRO C or 270 PRO D, drill motor RODIADRILL 2400 PD-E, spanner sizes 19/24/36/41, water supply hose (No. FF35302) complete concrete set (No. FF35120) copper ring 1. 1/4" (No. FF35190) Instruction manuals RODIADRILL 2400 PD-E (No. 90705) instruction manual RODIACUT® 170 - 400 (No. 90726) tool bag (No. FF70001).

Model	kg	No.
RODIACUT® 270 PRO C complete	25.8	<b>FF34271</b>
RODIACUT® 270 PRO D complete	25.5	<b>FF34270</b>
RODIADRILL 2400 PD-E	9.0	<b>FF40210</b>
Drill stand RODIACUT® 270 PRO C	16.8	<b>FF30271</b>
Drill stand RODIACUT® 270 PRO D	16.5	<b>FF30270</b>
Drill column 980 mm, Hub 595 mm	8.4	<b>FF50985</b>
Drill column 1385 mm, Hub 1000 mm	12.5	<b>FF50988</b>
Drill column 1885 mm, Hub 1500 mm	16.5	<b>FF50989</b>
Feed unit for RC 270 PRO	3.1	<b>FF50984</b>
Anchor base for RC 270 PRO	5.2	<b>FF50986</b>
Combination base for RC 270 PRO	7.7	<b>FF50987</b>
Angled support for RC 270 PRO anchor base	2.8	<b>FF50990</b>

### ACCESSORIES



Description	No.	Description	No.
RODIADRILL 3000 PD	<b>42, 43</b>	Vacuum set	<b>49</b>
Pressurized water container 10 l	<b>51</b>	RODIA DRY CLEANER 1200	<b>53</b>
Vacuum pump RODIA-VAC	<b>49</b>	Water collection ring, stationary (for FF30171)	<b>52</b>
Distance plate 15 mm	<b>FF35134</b>	Extension	<b>52</b>
Distance plate 20 mm	<b>FF35139</b>	Drill bits	<b>44 - 48</b>

# RODIA® Diamond Core Drilling

## Stationary Drilling

### RODIACUT® 400 PRO D

Drilling system with dowel plate,  
drill Ø 32 - 400 (500)\* mm



2



#### Product Profile

##### APPLICATION AREA

###### 2 applications in one unit:

Stationary wet drilling in (reinforced) concrete Ø 32 - 400 mm  
Stationary dry drilling in masonry Ø 32 - 400 mm

##### KEY FEATURES

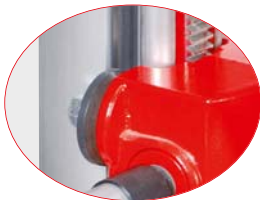
- Drill angle adjustments from -15° up to +45°, in 2.5° steps adjustable
- Exchangeable guide rail

##### TECHNICAL DATA (DRILL STANDS)

<b>Drilling range:</b>	w/o water collection ring: max. Ø 500 mm optional with distance plate
<b>Weight:</b>	28.4 kg
<b>Length:</b>	460 mm
<b>Width:</b>	260 mm
<b>Height:</b>	1,100 mm
<b>Hub:</b>	680 mm

##### TECHNICAL DATA (DRILL MOTOR)

<b>Drill motor:</b>	RODIADRILL 3000 PD
<b>Drilling range:</b>	in concrete max. Ø 500 mm in masonry max. Ø 500 mm
<b>Min. distance to wall:</b>	50 mm from drill hole centre
<b>Min. distance to corner:</b>	50 mm from drill hole centre
<b>Threaded adaptor:</b>	G 1/2" and 1.1/4" UNC
<b>Rated input/output:</b>	4,000 Watt / 3,000 Watt
<b>3 speed transmission:</b>	215 - 430 - 785 rpm
<b>Torque:</b>	185 - 107 - 55 Nm
<b>Charging rate:</b>	20.0 A
<b>Weight:</b>	12.1 kg



#### 4x roll guides

Precise and low vibration operation, flexible use / module concept

Sliding carriage can be used on all RODIACUT® PRO drill stands and columns

Toolless quick mounting/demounting of drill motor on drill stand



#### \*Distance plates optional (No. FF35138)

To enlarge the drill hole diameter from Ø 400 to 500 mm with RODIACUT® 400 PRO

#### Rubber transport wheels

Quick and easy transport on the building site



#### Drill angle adjustments

Adjustable from -15° up to +45° in 2.5° steps



# RODIA® Diamond Core Drilling

## Stationary Drilling



### Characteristics 400 PRO D

#### Standard with both drill stands:

- 4x roll guides for precise and low-vibration drilling
- Stainless steel handle, can be changed without tools
- Exchangeable rack and guide rail
- Stable threaded connection between column and base plate
- Transport handle
- Lockable feed unit
- Drill depth measuring scale

### Combination possibilities of the feed unit RODIACUT® 170 / 270 / 400 PRO

Feed unit can be used on all RODIACUT® PRO drill stands and columns

Toolless quick mounting/demounting of drill motor on drill stand



**Gear reduction 1:3**  
Reduces the contact pressure of the drill bit

**Stainless steel handle**  
Toolless quick change for the operating side, sturdy design



**Exchangeable guide rail / exchangeable rack / motor mounting**  
Cost-saving spare parts

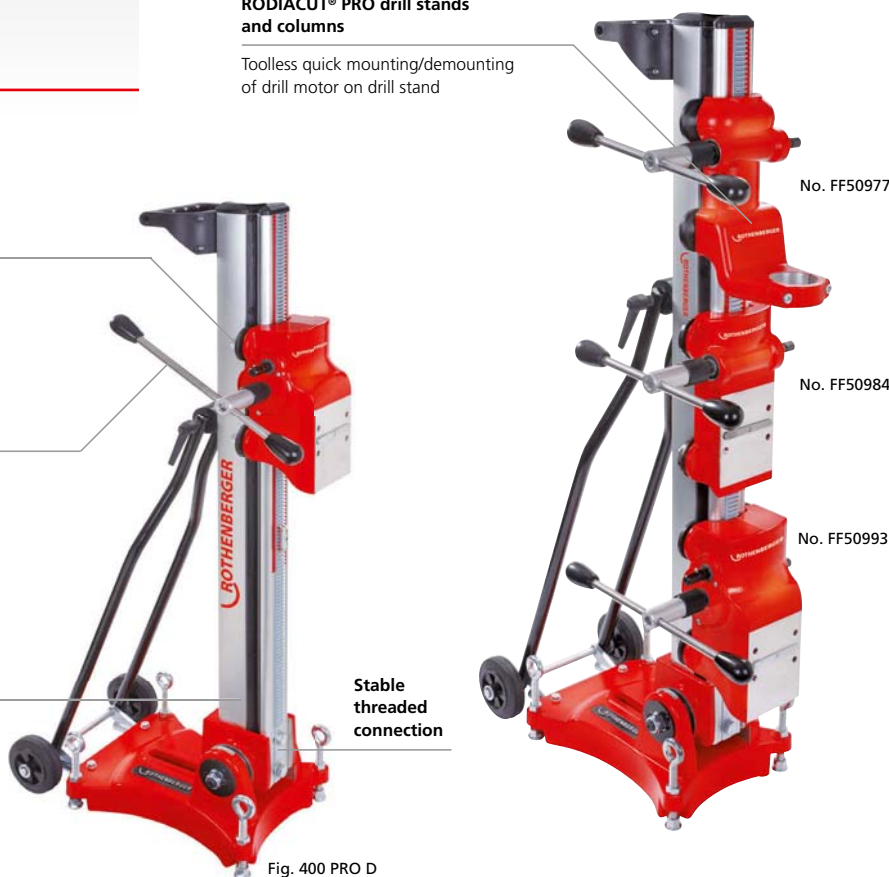


Fig. 400 PRO D

Scope of delivery (No. FF34300): Drill stand RODIACUT® 400 PRO D, drill motor RODIADRILL 3000 PD, spanner size 24/36/41, water supply hose (No. FF35302), hexagonal pin key (No. 321300), concrete set, complete (No. FF35120),

Copper ring 1.1/4" (No. FF35190), Instruction manual RODIADRILL 3000 PD (No. 90725), tool bag (No. FF70001).

Model	kg	No.
RODIACUT® 400 PRO D	40.5	<b>FF34300</b>
Drill stand RODIACUT® 400 PRO D	28.4	<b>FF30030</b>
Drill column 1100 mm, Hub 680 mm	11.7	<b>FF50995</b>
Drill column 1420 mm, Hub 1000 mm	16.1	<b>FF50996</b>
Drill column 1920 mm, Hub 1500 mm	21.4	<b>FF50997</b>

Description	kg	No.
Feed unit for RC 400 PRO D	5.1	<b>FF50993</b>
Angled support for RC 400 PRO D anchor base	3.2	<b>FF50998</b>
RODIADRILL 3000 PD	12.1	<b>FF40300</b>

### ACCESSORIES



Description	No.	Description	No.
RODIADRILL 2400 PD-E	<b>40 - 41</b>	Distance plate 70 mm	<b>FF35138</b>
Submergible water pump RODIAPUMP	<b>51</b>	RODIA DRY CLEANER 1200	<b>53</b>
Pressurized water container 10 l	<b>51</b>	Mounting articles	<b>50</b>
Copper ring 1.1/4"	<b>50</b>	Extensions	<b>52</b>
Distance plate 50 mm	<b>FF35131</b>	Drill bits	<b>44 - 48</b>
Distance plate 60 mm	<b>FF35136</b>		

# RODIA® Diamond Core Drilling

## RODIA® Diamond Drill Bits

### Space Welding

Cold welding process according to cutting-edge bonding technology: Due to the "neutral zone" the entire diamond segment is used without waste.

#### SPACE WELDING

Wet and dry drilling with new technology:

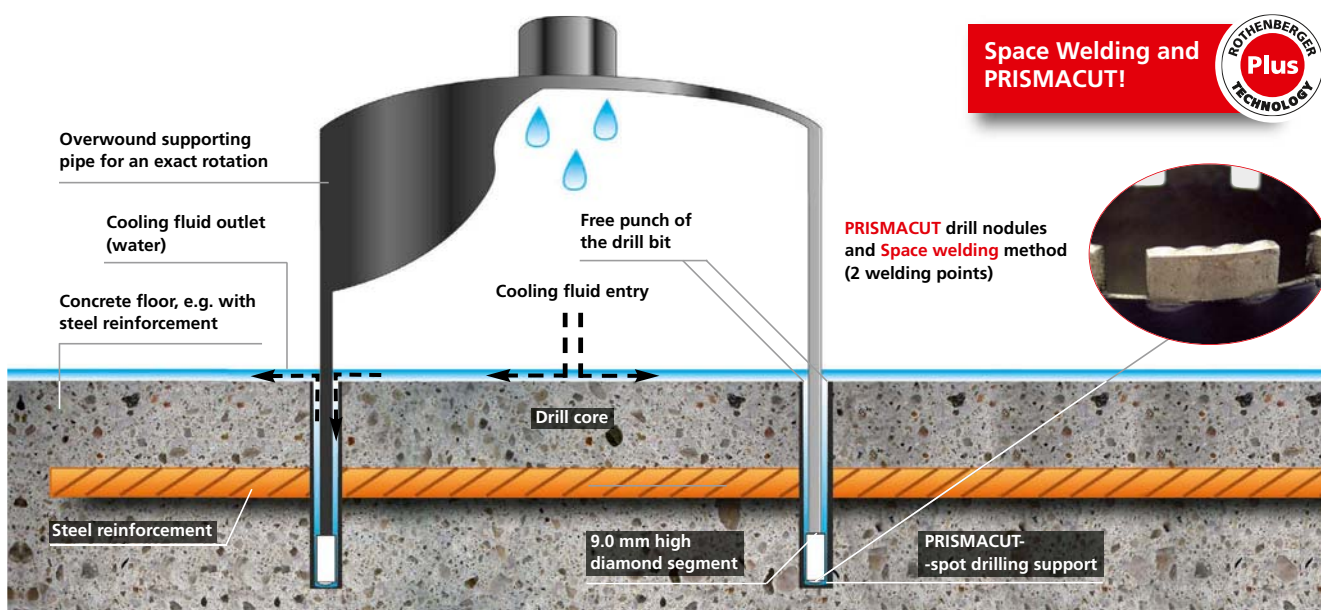
- The innovative high-performance drill bit DURAMANT PRO and SPEED STAR DX is produced using cutting-edge welding technology
- Because of the neutral zone, the "Space Welding" cold welding process guarantees the optimum use of the complete diamond segments without loss
- The service life is up to 20% higher compared to lasered and soldered drill bits

### PRISMACUT

Four drill nodules on the diamond segment improve the drill behaviour and at the same time provides optimum water cooling.

#### PRISMACUT

- The exceptional segment positioning offers optimum free punch size and an excellent cutting speed
- The "PRISMACUT" centre drill nodule is characterised by a better drill behaviour and preservation of the diamond segment
- PRISMACUT guarantees direct water cooling of the diamond segments
- 15% higher cutting speed with steel reinforcement



### Which Drill Bit for Which Material?

Drill bit type Use	Tiles	Granite	Marble	Hollow brickwork	Masonry	Lime sand brick	Asphalt	Reinf. concrete	Segment Fixation
<b>High Speed Plus natural stone</b> 	●●●	●●●	●●●	●●	●	●		●●●	soldering 
<b>DX-High Speed Plus + DURAMANT PRO</b> 	●	●	●	●●●	●●●	●●●	●	●●●	cold-welded 
<b>SPEED STAR DX</b> 	●●	●●	●●	●●●	●●●	●●●	●●	●●●	cold-welded 

suitable ●      very suitable ●●      ideally suited ●●●

### High Speed Plus Natural Stone

Soldered diamond core wet cutting drill bit Ø 6 - 67 mm for extremely hard materials

Suitable for all other drilling systems with G 1/2" and 1.1/4" UNC!



#### Product Profile

##### APPLICATION AREA

**Special wet drill bits** for drilling in natural stone, granite, marble, (double) baked brick, masonry, (reinforced) concrete, glass or hollow brickwork from Ø 6 - 67 mm

**Typical areas of application** are HVAC&R, plumbing and electronic installations, old building renovations, laying tile, stairs and railing installation, air-conditioning technology, garden and landscaping

##### KEY FEATURES

- Extremely easy cuts, very long service life through 9 mm high segments
- Suitable for all ROTHENBERGER drilling machines
- Balanced rotation reduces wear
- Drilling even through material combinations possible

##### KEY FEATURES

- Drill holes on the seam or edge of material possible with the use of diamond rings
- Conventional G 1/2" threaded attachments

##### TECHNICAL DATA

###### G 1/2" connection

Drill bits	Segment	Segment dimensions (L x W x H)
Ø 6 - 40 mm	Ring segments	Ring x (1.15 - 2.0) x 9 mm
Ø 45 - 67 mm*	4 - 6	24 x 2.5 x 8 mm
<b>Effective length:</b> Ø 6.3 - 10 mm = 50 mm		
Ø 12 - 67 mm = 120 mm		

Special length of 300 mm available upon request

\*Single segment mounting from Ø 45 mm

9 mm high segments with high diamond concentration

Extremely easy cutting, very long service life in granite tiles



Threaded adaptor G 1/2"

Suitable for all other ROTHENBERGER drilling machines



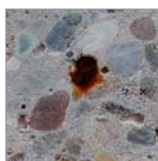
Overwound drill bits

Balanced rotation reduces wear

Drilling of the hardest materials



Reinf. concrete



Marble



Granite



Green granite



Masonry



Hollow brickwork



Aerated concrete



Asphalt



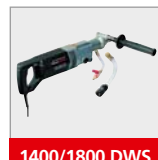
#### Suitable for



Ceramic ECO



Ceramic



1400/1800 DWS

Ø mm	kg	Adaptor G 1/2" No.
6.3	0.17	FF44806
8.3	0.17	FF44808
10	0.17	FF44810
12	0.19	FF44812
14	0.20	FF44814
15	0.20	FF44815
16	0.20	FF44816

Ø mm	kg	Adaptor G 1/2" No.
18	0.21	FF44818
20	0.22	FF44820
22	0.22	FF44822
24	0.22	FF44824
25	0.23	FF44825
26	0.23	FF44826
28	0.25	FF44828

Ø mm	kg	Adaptor G 1/2" No.
30	0.25	FF44830
32	0.25	FF44832
35	0.30	FF44835
36	0.32	FF44836
38	0.34	FF44838
40	0.34	FF44840
42	0.35	FF44842

Ø mm	kg	Adaptor G 1/2" No.
45*	0.42	FF44845
50*	0.60	FF44850
55*	0.65	FF44855
60*	0.72	FF44860
65*	0.76	FF44865
67*	0.79	FF44867

\* with single segment mounting



# RODIA® Diamond Core Drilling

## RODIA® Diamond Drill Bits

### DX-High Speed Plus Universal Drill Bits

Space welding universal wet and dry drill bits  
Ø 10 - 300 mm

Space Welding and  
PRISMACUT!



2



#### Product Profile

##### APPLICATION AREA

**Wet and dry drill bits** for drilling in reinforced concrete, asphalt, masonry, as well as lime sand brick for Ø 10 - 300 mm

**Typical areas of application** are HVAC&R and electronic installations, old building renovations, building industry, air-conditioning technology, garden and landscaping

##### KEY FEATURES

- Extremely easy cutting, safe cut in hand-operated use
- Faster cutting progress and extremely long service life
- Suitable for all other ROTHENBERGER drilling machines
- Balanced rotation reduces wear

#### TECHNICAL DATA

**G 1/2" connection** (300 mm effective length)

Drill bit	Segment	Segment dimensions (L x W x H)
Ø 10 - 40 mm	1	19.3 x 2.5 x 9 mm
Ø 42 - 62 mm	4 - 6	24.0 x 2.5 x 9 mm
Ø 72 - 92 mm	7 - 8	24.0 x 2.8 x 9 mm
Ø 102 - 132 mm	7 - 11	24.0 x 3.3 x 9 mm

**1.1/4" UNC connection** (430 mm effective length)

Ø 20 - 62 mm	1 - 6	24.0 x 2.5 x 9 mm
Ø 72 - 92 mm	7 - 8	24.0 x 2.8 x 9 mm
Ø 102 - 152 mm	9 - 12	24.0 x 3.3 x 9 mm
Ø 162 - 182 mm	12 - 14	24.0 x 3.8 x 9 mm
Ø 200 - 300 mm	14 - 20	24.0 x 4.0 x 9 mm

#### Suitable for



1400/1800 DWS\*



1800 DRY



2400 PD-E\*



3000 PD\*

\* We recommend the optional extraction rotor when using as a dry drill bit

**Highest service life and  
universal application!**

#### Threaded adaptor G 1/2" and 1.1/4" UNC

Suitable for all other  
ROTHENBERGER  
drilling machines



#### Special segment mix

Quicker drilling progress  
and extremely long service life

Extremely easy cuts,  
safe cuts in hand  
operated use

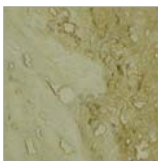
#### Space welding

Allows wet and dry use

#### Overwound drill bits

Balanced rotation reduces wear

Marble



Masonry



Hollow brickwork



Pavement



Lime sand brick



Reinf. concrete



Ø mm	kg	Adaptor G 1/2" No.
20	0.5	FF44620
30	0.6	FF44630
40	0.7	FF44640
52	0.9	FF44650
62	1.2	FF44660
72	1.4	FF44670

Ø mm	kg	Adaptor G 1/2" No.
82	1.6	FF44680
92	1.9	FF44690
102	2.1	FF44700
112	2.4	FF44710
122	2.6	FF44720
132	2.9	FF44730

Ø mm	kg	Adaptor 1.1/4" No.	Ø mm	kg	Adaptor 1.1/4" No.
30	0.7	FF44030	132	4.6	FF44130
40	1.2	FF44040	142	5.0	FF44140
52	1.6	FF44050	152	6.4	FF44150
62	1.9	FF44060	162	7.0	FF44160
72	2.3	FF44070	172	7.5	FF44170
82	2.6	FF44080	182	8.0	FF44180
92	3.0	FF44090	200	9.0	FF44200
102	3.4	FF44100	220	11.4	FF44220
112	3.8	FF44110	250	13.6	FF44250
122	4.2	FF44120	300	19.3	FF44300

### SPEED STAR DX

Space welding wet and dry drill bits Ø 10 - 500 mm

#### Product Profile

#### APPLICATION AREA

**Wet and dry drill bits** for asphalt, masonry, as well as natural and artificial stone of Ø 10 - 500 mm

**Typical areas of application** are HVAC&R, plumbing, old building renovations, building industry, air-conditioning technology, gardening and landscaping

#### KEY FEATURES

- Extremely easy cuts, safe cut in hand-operated use
- Balanced rotation reduces wear
- Suitable for all other ROTHENBERGER drilling machines
- Standard lengths 400 / 500 mm, special lengths available on request
- Conventional G 1/2" and 1.1/4" UNC threaded adaptors

Space Welding and PRISMACUT!



#### TECHNICAL DATA

Drill bits	Segment	Segment dimensions (L x W x H)
Ø 10 - 38 mm	1	16 x 3.0 x 7.0 mm
Ø 40 - 48 mm	1 - 4	24 x 3.0 x 9.0 mm
Ø 50 - 55 mm	5 - 6	24 x 3.5 x 9.0 mm
Ø 56 - 72 mm	6 - 7	24 x 3.5 x 9.0 mm
Ø 75 - 102 mm	7 - 8	24 x 3.5 x 9.0 mm
Ø 107 - 142 mm	9 - 11	24 x 4.0 x 9.0 mm
Ø 142 - 182 mm	11 - 14	24 x 4.0 x 9.0 mm
Ø 182 - 250 mm	14 - 16	24 x 4.0 x 9.0 mm
Ø 300 - 500 mm	16 - 26	20 x 5.0 x 9.0 mm

**Connection G 1/2":** Effective length 400 mm  
**Connection 1.1/4" UNC:** Effective length 500 mm



Durable (DURAMANT) PRISMACUT

Extremely easy cutting, safe cut in hand-operated use

Extremely high diamond concentration

Faster drilling progress



Special drill bits for pavement, asphalt, as well as special lengths up to 1000 mm available upon request!

#### Suitable for

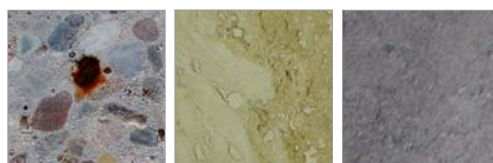


\* We recommend the optional extraction rotor when using as a dry drill bit

Threaded adaptor G 1/2" and 1.1/4" UNC

Suitable for all other ROTHENBERGER drilling machines

Reinf. concrete    Marble    Asphalt



Overwound drill bits

Balanced rotation reduces wear

Ø mm	kg	Adaptor G 1/2" No.	Ø mm	kg	Adaptor G 1/2" No.	Ø mm	kg	Adaptor 1.1/4" No.	Ø mm	kg	Adaptor 1.1/4" No.
10	0.3	FF00610	52	0.9	FF00650	20	0.5	FF00020	122	4.2	FF00120
12	0.4	FF00612	56	1.2	FF00655	25	0.6	FF00025	125	4.3	FF00125
14	0.4	FF00614	62	1.2	FF00660	30	0.7	FF00030	132	4.6	FF00130
15	0.4	FF00615	66	1.3	FF00665	40	1.2	FF00040	142	5.0	FF00140
16	0.4	FF00616	72	1.4	FF00670	46	1.4	FF00045	152	6.4	FF00150
18	0.4	FF00618	76	1.5	FF00675	52	1.6	FF00050	162	7.0	FF00160
20	0.5	FF00620	82	1.6	FF00680	56	1.7	FF00055	172	7.5	FF00170
24	0.5	FF00624	87	1.7	FF00685	62	1.9	FF00060	182	8.0	FF00180
25	0.5	FF00625	92	1.9	FF00690	66	2.1	FF00065	200	9.0	FF00200
26	0.5	FF00626	95	2.0	FF00695	72	2.3	FF00070	220	11.4	FF00220
28	0.6	FF00628	102	2.1	FF00700	76	2.4	FF00075	250	13.6	FF00250
30	0.6	FF00630	108	2.3	FF00705	82	2.6	FF00080	280	17.6	FF00280
32	0.6	FF00632	112	2.4	FF00710	87	2.8	FF00085	300	19.3	FF00300
35	0.7	FF00635	117	2.5	FF00715	92	3.0	FF00090	350	23.6	FF00350
38	0.7	FF00638	122	2.6	FF00720	102	3.4	FF00100	400	28.4	FF00400
40	0.7	FF00640	127	2.8	FF00725	108	3.6	FF00105	450	33.6	FF00450
46	0.7	FF00645	132	2.9	FF00730	112	3.8	FF00110	500	39.1	FF00500

Suitable for all other drilling systems with G 1/2" and 1.1/4"!

# RODIA® Diamond Core Drilling

## RODIA® Diamond Drill Bits

### DURAMANT PRO Universal Drill Bits

Space welding wet and dry drill bits  
Ø 10 - 500 mm

Space Welding and  
PRISMACUT!



2

#### Product Profile

##### APPLICATION AREA

**Wet drill bits** for drilling in reinforced-concrete asphalt, as well as natural and artificial stone from Ø 10 - 500 mm

**Dry drill bits** for drilling in masonry, lime sand brick, poroton and other light building materials from Ø 32 -500 mm

##### KEY FEATURES

- Enables wet and dry use
- Extremely easy cutting, safe cut in hand-operated use
- Faster drilling progress and longer service life
- Suitable for all other ROTHENBERGER drilling machines
- Balanced rotation reduces wear
- Standard lengths 400 mm with G 1/2" and 500 mm with 1.1/4" UNC
- Conventional G 1/2" and 1.1/4" UNC threaded adaptors

##### TECHNICAL DATA

Drill bit	Segment	Segment dimensions (L x W x H)
Ø 10 - 38 mm	1	16 x 3.0 x 7.0 mm
Ø 40 - 48 mm	1 - 4	24 x 3.0 x 9.0 mm
Ø 50 - 55 mm	5 - 6	24 x 3.5 x 9.0 mm
Ø 56 - 72 mm	6 - 7	24 x 3.5 x 9.0 mm
Ø 75 - 102 mm	7 - 9	24 x 3.5 x 9.0 mm
Ø 107 - 142 mm	9 - 11	24 x 4.0 x 9.0 mm
Ø 142 - 182 mm	11 - 14	24 x 4.0 x 9.0 mm
Ø 182 - 250 mm	14 - 16	24 x 4.0 x 9.0 mm
Ø 300 - 500 mm	16 - 28	20 x 5.0 x 9.0 mm

#### Suitable for



1400/1800 DWS\*



1800 DRY



2400 PD-E\*



3000 PD\*

#### Threaded adaptor G 1/2" and 1.1/4" UNC

Suitable for all other  
ROTHENBERGER  
drilling machines

#### DURAMANT PRO segments

Allows wet and dry use

#### Overwound drill bits

Balanced rotation reduces wear

#### Durable (DURAMANT) PRISMACUT

Extremely easy cutting, safe cut in  
hand-operated use



Hollow brickwork

Pavement

Lime sand brick

Reinf. concrete

Marble

Masonry



#### Special segment composition

Faster drilling progress and  
extremely long service life

Ø mm	kg	Adaptor G 1/2" No.	Ø mm	kg	Adaptor G 1/2" No.	Ø mm	kg	Adaptor 1.1/4" No.	Ø mm	kg	Adaptor 1.1/4" No.
10	0.3	FF42610	46	0.8	FF42645	20	0.5	FF42020	122	4.2	FF42120
12	0.4	FF42612	52	0.9	FF42650	25	0.6	FF42025	125	4.3	FF42125
14	0.4	FF42614	56	1.2	FF42655	30	0.7	FF42030	132	4.6	FF42130
15	0.4	FF42615	62	1.2	FF42660	35	0.8	FF42035	142	5.0	FF42140
16	0.4	FF42616	66	1.3	FF42665	40	1.2	FF42040	152	6.4	FF42150
18	0.4	FF42618	72	1.4	FF42670	46	1.4	FF42045	162	7.0	FF42160
20	0.5	FF42620	76	1.5	FF42675	52	1.6	FF42050	172	7.5	FF42170
22	0.5	FF42622	82	1.6	FF42680	56	1.7	FF42055	182	8.0	FF42180
24	0.5	FF42624	87	1.7	FF42685	62	1.9	FF42060	200	9.0	FF42200
25	0.5	FF42625	92	1.9	FF42690	66	2.1	FF42065	220	11.4	FF42220
26	0.5	FF42626	95	2.0	FF42695	72	2.3	FF42070	225	12.5	FF42225
28	0.6	FF42628	102	2.1	FF42700	76	2.4	FF42075	250	13.6	FF42250
30	0.6	FF42630	108	2.3	FF42705	82	2.6	FF42080	280	17.6	FF42280
32	0.6	FF42632	112	2.4	FF42710	87	2.8	FF42085	300	19.3	FF42300
35	0.7	FF42635	117	2.5	FF42715	92	3.0	FF42090	350	23.6	FF42350
38	0.7	FF42638	122	2.6	FF42720	102	3.4	FF42100	400	28.4	FF42400
40	0.7	FF42640	127	2.8	FF42725	108	3.6	FF42105	450	33.6	FF42450
			132	2.9	FF42730	112	3.8	FF42110	500	39.1	FF42500

### Galvano Drill Bit Set

For drilling stoneware tiles Ø 6 - 83 mm

A cost-effective alternative for drilling in stoneware tiles. With the help of a drilling fixture, drillings can be purposely and accurately positioned. Optimum drilling results are achieved when used with the water flow socket included in the set

#### KEY FEATURES

- Drill and centering aid up to Ø 43 mm
- Water flow socket with 3 edge adaptor
- Galvano drill with 3 edged shaft

#### Centre drill support with suction cup

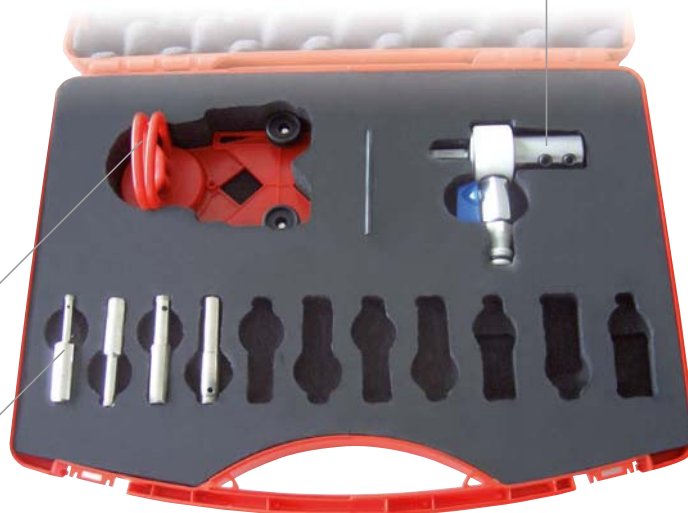
Variable adjustment of the drill dimensions up to Ø 43 mm

#### Galvano drill

Ø 6 - 8 - 10 - 12 mm

#### Water connection

Using GARDENA quick hose system in G 1/2"



Set (No. 19320) includes: Galvano drill (6 - 8 - 10 - 12 mm), centre drill support, water connection, plastic case

Description		No.
Galvano Drill Bit Set	6-8-10-12 mm	<b>19320</b>

Description		No.
Centre drill support up to	43 mm	<b>FF35749</b>
Centre drill support up to	83 mm	<b>FF35750</b>

### Vacuum Pump RODIA-VAC

This vacuum pump is suitable for all diamond core drilling units. An extraction tank prevents the vacuum plate from loosening quickly during a sudden power failure. Oil-free vacuum pump with pressure gauge.

#### Vacuum Sets



No. FF35710  
No. FF35740

### Quick Clamping Column

Toolless and reliable bracing between floor and wall or wall and wall. Maximum operation range from 1.7 m up to 3.0 with a load capacity up to 500 kg with sideway guidance.

Description		No.
Quick Clamping Column	9.0	<b>FF35015</b>
Vacuum pump RODIA-VAC 230 V	20.0	<b>FF35200</b>
Vacuum set, RODIACUT® 130, 131 DWS, 170 C	1.1	<b>FF35710</b>
Spare foamed rubber for drill base	0.1	<b>FF50007</b>
Vacuum set RODIACUT® 202 DWS, 270 C	1.1	<b>FF35740</b>
Spare foamed rubber for drill base	0.1	<b>FF50008</b>
Sharpening stick (286 x 152 x 40 mm)	1.8	<b>FF35135</b>

1.1 KW motor power  
85% Vacuum  
200 l/min extraction volume

#### 10 l extraction tank

Safety during a power failure



No. FF35015



No. FF35135

# RODIA® Diamond Core Drilling

## Accessories Hand-Operated & Stationary Drilling

### Concrete Fixing Set

Includes (No. FF35120): Knurled thread rod Type G-B 160 mm, screw thread M 12/20 mm (No. FF35129), U-washer (No. FF70166), winged nut M 12 (No. FF55150), 25 x drive-in anchor M 12 (No. FF 35122) and drive-in iron (No. FF35128)



### Masonry Fixing Set

Includes (No. FF35121): Knurled thread rod Type G-M 280 mm, screw thread M 12/85 mm (No. FF35130), U-washer (No. FF70166), winged nut M 12 (No. FF55150), hexagonal nut M12 (No. FF70167), 5 x rawl anchor M 12 (re-usable) (No. FF35126) and drive-in iron (No. FF35128)



### Special Diamond Drills for Tiles and Natural Stone

For use when hammer drills can not do the job. Various material combinations, such as tiles on concrete, can be easily drilled without damage.



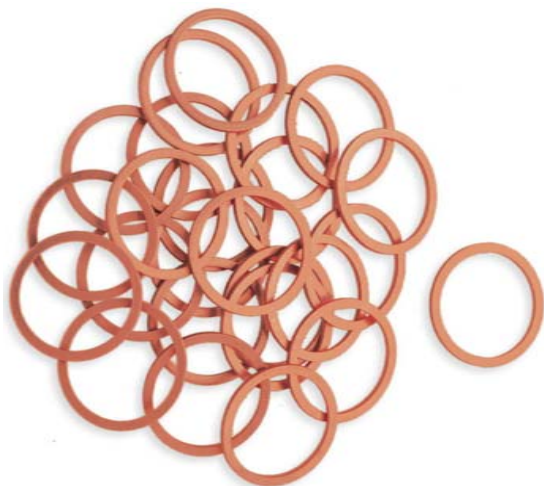
Special Diamond Drills  
for Tiles and Natural Stone

Description	kg	No.
Concrete fixing set	1.90	<b>FF35120</b>
Drive-in anchor M12	0.04	<b>FF35122</b>
Threaded rod, B15 concrete set	0.20	<b>FF35129</b>
Threaded rod, B15 masonry	0.30	<b>FF35130</b>
Wet drill bit Ø 15 mm	0.20	<b>FF44815</b>
SDS-plus hammer drill Ø 15 - 160 mm	0.16	<b>111429</b>
Masonry fixing set	1.10	<b>FF35121</b>
Rawl anchor M 12	0.08	<b>FF35126</b>
Wet drill bit Ø 20 mm	0.22	<b>FF44820</b>
SDS-plus hammer drill Ø 20 - 300 mm	0.22	<b>111449</b>

### Copper Rings 1.1/4"

#### KEY FEATURES

- Levels out the unevenness between motor connection and drill bit
- Easy loosening prevents drill bits from getting stuck on the driveshaft



Description	g	No.
Copper Ring 1.1/4"	5	<b>FF35190</b>

### Thread Interfaces

Between motor connection and drill bit



No. FF35095



No. FF35080



No. FF35091

Description	kg	No.
G 1/2" ext. thread onto 1.1/4" UNC ext. thread	0,5	<b>FF35080</b>
1.1/4" UNC int. thread onto G 1/2" int. thread	0,7	<b>FF35095</b>
Drill bit adaptor DD-BI on to G 1/2" + 1.1/4"	0,5	<b>FF35091</b>
Drill bit adaptor DD-BU on to G 1/2" + 1.1/4"	0,8	<b>FF35092</b>
Drill bit adaptor WÜRTH onto 1.1/4"	0,6	<b>FF35101</b>

### Water Supply

The sturdy 10 litre pressurized water container made of steel is perfectly suited for individual drilling. When drilling large diameters or series drillings, the fully submersible RODIAPUMP enables a mobile supply of water from buckets or other containers up to a delivery height of 5 meters using a 1" water hose.

#### Comfortable water connection

Quick connection with the GK adaptor and quick-plug coupling

#### Rust-free motor shaft

Prevents the quick jamming of the rotor

#### Fine filter

Prevents entry of foreign materials and protects the motor shaft



No. FF35029

#### Manometer

pressure indicator



No. FF35026

#### 2.5 meter hose length

Ideal use for ceiling holes



#### Connection Quick plug-in coupling

Drip-free connection even under water pressure

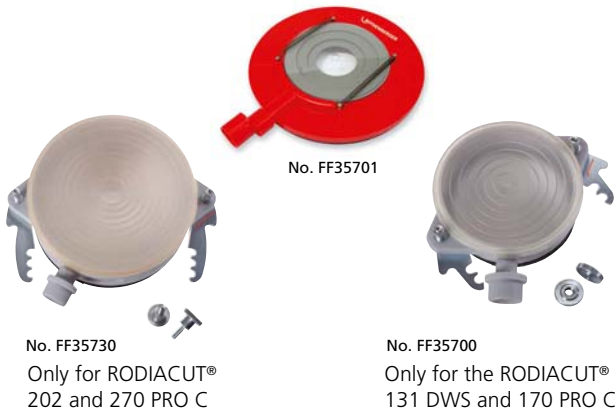
Description	kg	No.
Pressurized water container	5.50	<b>FF35026</b>
Submersible water pump RODIAPUMP	4.40	<b>FF35029</b>
Special water supply hose	0.20	<b>FF35301</b>
Water supply hose with "Aqua-stop"	0.20	<b>FF35302</b>



# RODIA® Diamond Core Drilling

## Accessories Hand-Operated & Stationary Drilling

2



No. FF35730  
Only for RODIACUT®  
202 and 270 PRO C

No. FF35700  
Only for the RODIACUT®  
131 DWS and 170 PRO C

### Water Extraction Systems

The dirty cooling water is extracted in connection with a wet and dry vacuum (FF35148, FF35210)

Description	kg	No.
Water collection ring, stationary (up to Ø 132 mm)	1.2	<b>FF35700</b>
Spare rubber membrane (for FF35700)	0.3	<b>FF55131</b>
Water collect. ring, hand-opd. (up to Ø 132 mm)	0.8	<b>FF35701</b>
Spare water collection ring discs (for FF35701)	0.2	<b>FF35702</b>
Adaptor for vacuum (FF35701)	0.1	<b>FF35703</b>
Water collection ring, stationary (up to Ø 200 mm)	2.5	<b>FF35730</b>
Spare rubber membrane (for FF35730)	0.6	<b>FF55201</b>



Extension rods G 1/2"

Extension rods  
1.1/4" UNC

### Extensions

G 1/2" and 1.1/4" UNC

#### KEY FEATURES

- Easy extension of the drilling depth
- High-quality and robust steel design

Nominal length mm	kg	G 1/2" No.	kg	1.1/4" UNC No.
100	0.40	<b>FF35040</b>	1.00	<b>FF35060</b>
200	0.90	<b>FF35045</b>	2.00	<b>FF35065</b>
300	1.40	<b>FF35050</b>	3.00	<b>FF35070</b>
500	2.40	<b>FF35055</b>	5.10	<b>FF35075</b>



No. FF03301

No. FF35097

No. FF35096

### Centering Pin

From Ø 90 up to 400 mm

Universal drilling assistance for hand-operated drilling moveable carbide centering tip, quick and toolless assembly / disassembly.

### Extraction Rotor "RODIADUST"

Universal adaptor for wet drilling machines for dust-free dry drilling

Provides optimum extraction results in conjunction with RODIA DRY CLEANER (FF35148) and increases the drilling process, prevents jamming of drill bit and reduces segment wear.



No. FF40056

### Support Plates for Centering Pin

From Ø 31 mm up to Ø 201 mm

Suitable for FF03300, FF03301, FF03302, FF03303 support plates in connection with centering pin allows a precise drill hole exactly where it is needed.

- Secure hold, drill bit will not slip on the subsurface
- Fast and toolless assembly / disassembly without the need for screws

Description	kg	No.
Extraction Rotor 1.1/4" UNC (G 1/2"-machine side)	1.0	<b>FF40056</b>
Centering Pin for extraction rotor 300 mm	0.3	<b>FF03300</b>
Centering Pin for extraction rotor 400 mm	0.3	<b>FF03301</b>
Adaptor for RODIADRILL 1800 DWS/DRY	0.1	<b>FF35097</b>
Centering tip "Quick-Out" ICW. FF35097	0.1	<b>FF35096</b>

Ø mm	g	No.	Ø mm	g	No.
31	5	<b>FF03308</b>	111	50	<b>FF03316</b>
41	8	<b>FF03309</b>	121	55	<b>FF03317</b>
51	10	<b>FF03310</b>	131	58	<b>FF03318</b>
61	13	<b>FF03311</b>	151	77	<b>FF03319</b>
71	17	<b>FF03312</b>	161	80	<b>FF03320</b>
81	18	<b>FF03313</b>	171	85	<b>FF03321</b>
91	22	<b>FF03314</b>	181	100	<b>FF03322</b>
101	44	<b>FF03315</b>	201	120	<b>FF03323</b>

### RODIA DRY CLEANER 1200

#### Wet and dry extraction unit

Especially good performance when used with WALL CUT 6540, RODIADRILL 1800 DRY or other ROTHENBERGER extraction-friendly system products

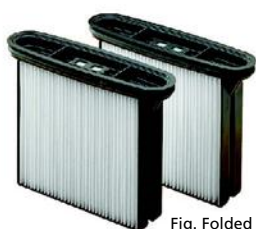


Fig. Folded filter  
No. FF55374

Model	kg	No.
RODIA DRY CLEANER 1200	10.8	<b>FF35148</b>
Folded filter (2 piece) for wet suction	1.0	<b>FF55374</b>
Fleece filter (5 piece) for dry suction	0.3	<b>FF55388</b>

Constant extraction power!  
Automatic filter-cleaning function!

#### High cleaning efficiency

2 polyester-filter cassettes with 99.9% dust retention (max. 20 l), water retention of 15 litres



#### Separate automatic outlet

Adaptor for further electric tools

#### User comfort with a wide operating range

5 m long suction hose and 8 m long AC power cord

### RODIA CLEANER 1400

#### Water suction unit

##### KEY FEATURES

- Easy-to-handle and powerful 1400 watt water extraction unit
- 35 litre container made of zinc-plated steel plate with acrylate coating: Rust-free
- Separate automatic outlet connection for an additional electrical tools



Set (No. FF35210) includes various extraction tubes and extraction nozzles. Wet-suction is possible when used with the cartridge filter system. When used with a cloth filter, dry suction possible. Suitable for use with our core drilling systems.

Model	kg	No.
RODIA CLEANER 1400	9.0	<b>FF35210</b>
Cartridge filter	1.0	<b>FF55447</b>
Paper filter (5 piece)	1.0	<b>FF55448</b>

#### Separate automatic outlet

Connection for additional electrical tools



#### Light and easy-to handle

Impact protective ring at base with 4 double roller wheels, 9 kg weight

