



“ROSCOPE® i2000: user-friendly, thanks to an intuitive touchscreen. Images and videos can be processed and sent using an integral WiFi transmitter and the i2000 App”



# Inspection & Locating

<b>System Overview Video Inspection</b>	190 - 191
<b>Video Inspection</b>	
ROSCOPE® i2000 Overview	192 - 193
ROSCOPE® i2000 App	194
Inspection Module for ROSCOPE® i2000	195 - 196
Locating Module for ROSCOPE® i2000	197
ROCAM® Pipe Inspection Camera	198 - 200
Accessories for ROCAM® Pipe Inspection Camera	201



*Do you want to know more about our products? Please scan the QR-Code!*



# Inspection & Locating

## System Overview Video Inspection

### ROSCOPE® i2000

Modular system for inspection of pipes and hollow spaces

#### KEY FEATURES

- Photos and videos can be easily stored on the SD card
- Various modules for different pipe dimensions and cable lengths
- Module TEC and Module 25/16 have self-leveling pictures
- Module ROLOC PLUS for precise locating of the camera head



## Which ROSCOPE® system for which application area?



**1** **Module TEC**  
Cable length / range: 0.9 m  
Working range: hollow spaces  
Page 195



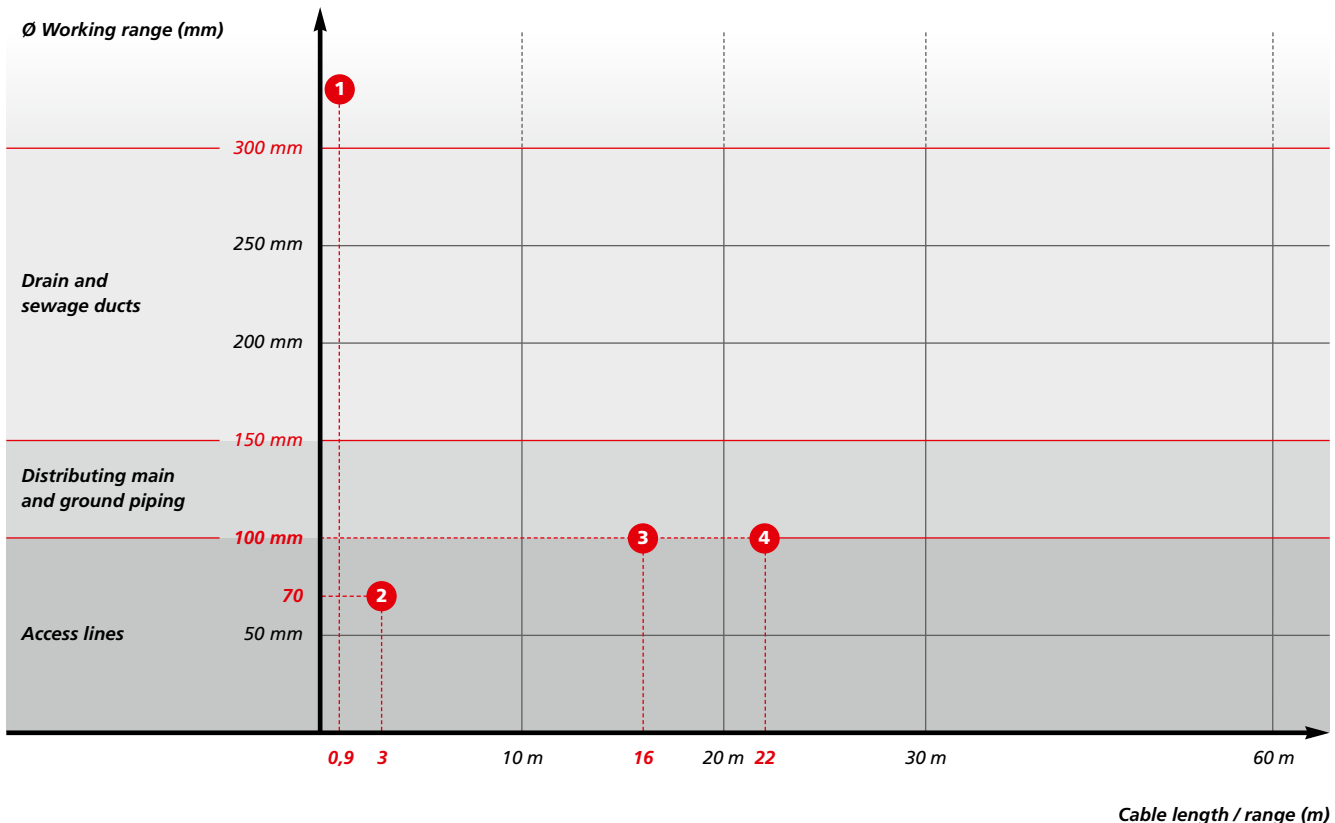
**2** **Module 20/3**  
Cable length / range: 3 m  
Working range: up to Ø 70 mm



**3** **Module 25/16**  
Cable length / range: 16 m  
Working range: up to Ø 100 mm  
Page 196



**4** **Module 25/22**  
Cable length / range: 22m  
Working range: up to Ø 100 mm  
Page 195



### ROCAM®

Camera for the inspection of pipes

#### KEY FEATURES

- Professional documentation with protocol file and data recording
- Self-leveling picture
- Recording of videos and photos
- Can be used immediately, no mounting of the reel is necessary
- Fits various pipe diameters
- ROCAM® 3 Multimedia with an integrated transmitter for the precise locating of the camera head



### Which ROCAM® for which application area?



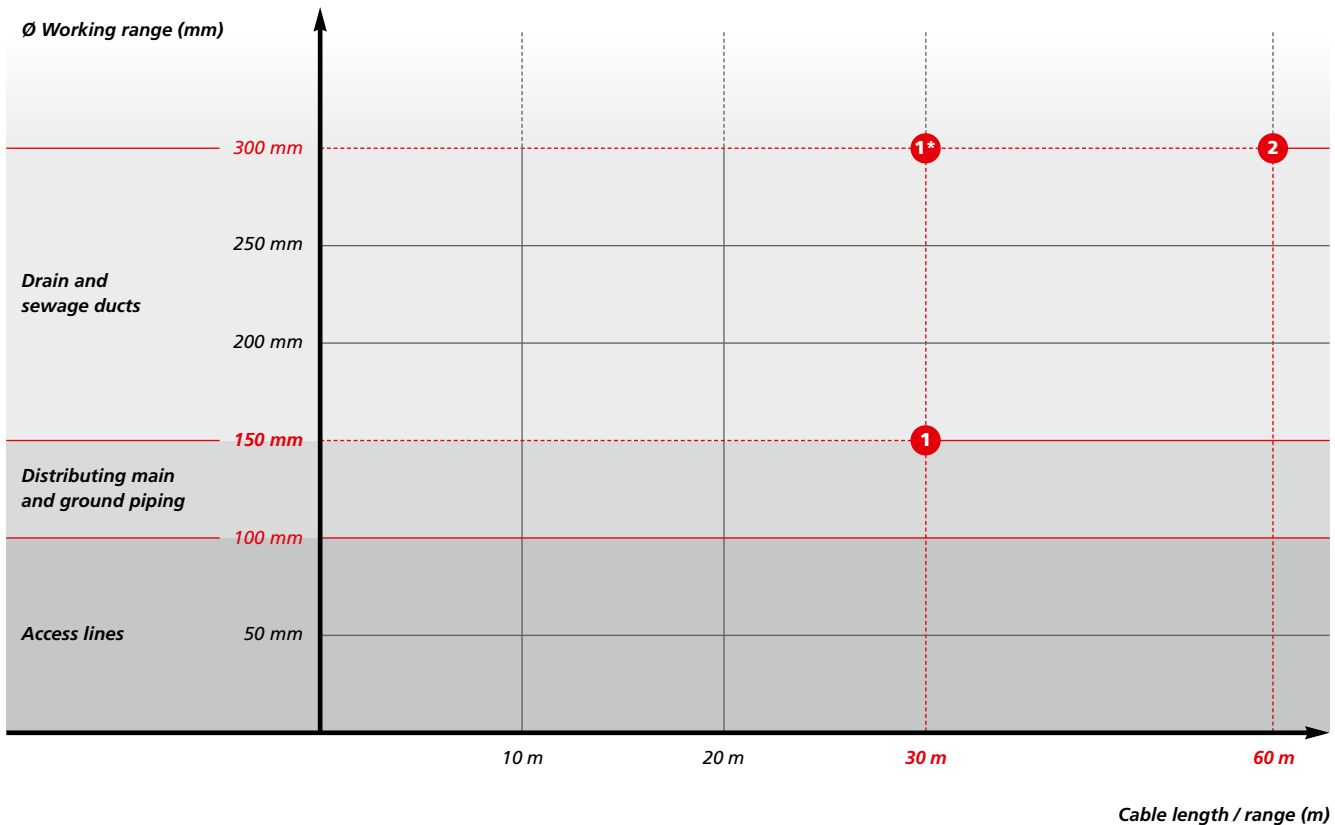
**1** **ROCAM® 3 Multimedia**  
Cable length / range: 30 m  
Working range: up to Ø 150 mm  
(\*Can be optionally used with the SL-40 camera head up to Ø 300 mm)  
Page 198



**2** **ROCAM® Plus**  
Cable length / range: 60 m  
Working range: up to Ø 300 mm  
Page 200



ROCAM® 3 Multimedia with removable control unit



# Inspection & Locating

## Video Inspection

### ROSCOPE® i2000

Inspection and locating technology combined in one unit with multiple functions. Modular system allows for various applications.



#### Product Profile

##### APPLICATION AREA

The ROSCOPE® i2000 covers almost all inspection techniques within living and working spaces. Camera and locating modules allow a multifunctional use. WiFi technology enables a quick and easy data transfer.

##### KEY FEATURES

- User-friendly touchscreen monitor and simple menu guidance
- Easy data transfer for subsequent processing
- Audio recording and playback possible without further equipment
- USB charging function

##### TECHNICAL DATA

**Display:** 3.5" Touchscreen (color)  
**Video format:** AVI  
**Picture format:** JPEG, 640 x 480 pixels  
**Connection:** Mini-USB, AV-Out, SD-card slot  
**Power supply:** Li-ion battery 3.7 V / 4.2 Ah

### Versatile and user-friendly!

#### 3.5" Touchscreen

640 x 480 pixel resolution (JPEG)

#### Ergonomic handling

Function keys arranged closely together

#### Slip-free handle

For comfortable and effort saving operation - even over long periods of time

#### Compatible connection

Previous ROTHENBERGER modules can be used

#### WiFi

Easy data transfer to mobile devices

#### SD-card slot

Memory space for audio, video and image data

#### Integrated microphone

#### Integrated speaker

For audio playback

#### Powerful Li-ion battery

For an extra long battery life and short charging times



### ROSCOPE® i2000 App

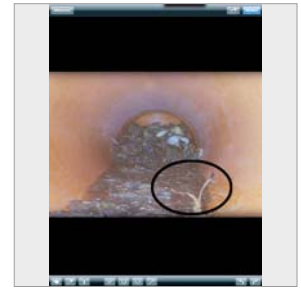
App for smartphone and tablet to edit and send recorded image data

#### APPLICATION ADVANTAGES

- WiFi-transmitter allows a live image transfer from the ROSCOPE® i2000 to mobile devices
- Integrated editing function to indicate and mark specific pipeline damages
- Synchronizing of stored images of the ROSCOPE® i2000 to allow further processing
- Sending of edited pictures directly from the place of action



Transfer to mobile devices



Editing with the ROSCOPE® i2000 App

### For Inspection: MULTIVIEW

Modular concept for visual inspection of pipes, hollow spaces and pipes

#### KEY FEATURES

5 different modules for the ROSCOPE® i2000 basic unit

- With the Module Micro 5.5/1 you have access to the tightest spaces, for example in engine compartments
- Hollow space inspection with self-leveling picture with the Module TEC
- Inspection of pipes up to Ø 100 with Module 25/16 or 25/22
- Waterproof pipe module for pipe inspection in 90° bends from Ø 40 mm

#### Module 25/16



#### Module 25/22



#### Module 20/3



#### Module TEC



#### Module Micro 5.5/1



### For Locating: ROLOC PLUS

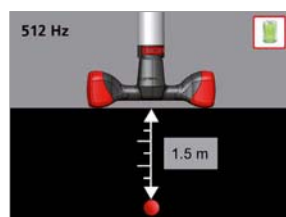
Positioning module for sondes

#### KEY FEATURES

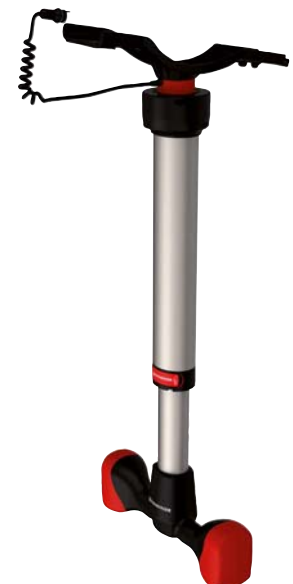
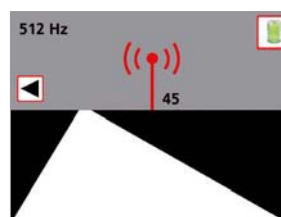
- The unit guides through the locating process reliably
- Minimises the effort needed for evacuations or locating damaged areas on the pipe with pin-point locating of the camera head
- Pin-point locating of the specific location with the depth measurement function



Camera head is 1.5 m deep



Target is right of the running direction. Correction of your direction to the right is necessary



# Inspection & Locating

## Video Inspection

### ROSCOPE® i2000 App

App for smartphone and tablet to edit and send recorded image data

#### Product Profile

##### APPLICATION ADVANTAGES

- WiFi-transmitter allows a image transfer live from the ROSCOPE® i2000 to mobile devices
- Integrated editing function to mark and name specific pipeline damages
- Synchronizing of stored images of the ROSCOPE® i2000 to allow further processing
- Sending of edited pictures directly from the place of action

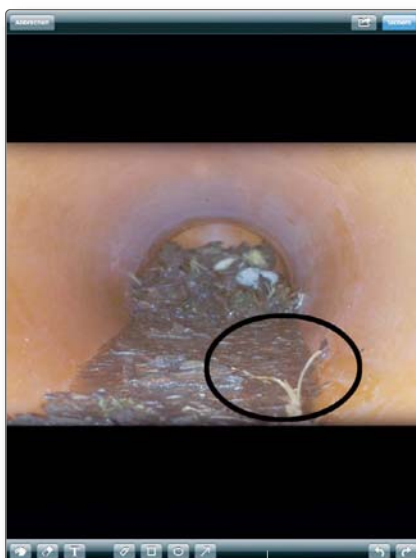
##### TECHNICAL DATA

**Compatibility:** iOS 5.1 or newer, Android 4.0 or even newer models  
**Size:** 4,1 MB

Live Image



Editing Display



Album



Album

Picture and Video Recording

Settings / Notes

Editing

Change to edit settings

- Color palette
- Pen and Rubber
- Text
- Right-angle, Circle, Arrow



Inspection of basin drains

**Available for iOS and Android!**

Self-leveling camera head



No. 69615



Inspection of hollow spaces



Camera head with high-performance LEDs



### ROSCOPE® i2000 Module TEC

High-performance camera for the inspection of hollow spaces and hard to reach areas

#### Product Profile

##### KEY FEATURES

- User-friendly touchscreen monitor and simple menu guidance
- Self-leveling camera head
- Recording and playback of the inspection on video (AVI) or photo (JPEG)
- Waterproof camera head as per IP 68

##### TECHNICAL DATA

<b>Display:</b>	3.5" Touchscreen (color) (technical data about basic unit available on page 192)
<b>Camera head:</b>	Ø 17 mm, <b>self-leveling</b> and waterproof, with 4 LED lights
<b>Brightness:</b>	100 LUX (0.5 m)
<b>Cable length:</b>	0.9 m
<b>Power supply:</b>	Li-ion battery 3.7 V / 4.2 Ah
<b>Weight:</b>	0.9 kg

Scope of delivery ROSCOPE® i2000 Module TEC (No. 1500000696):  
ROSCOPE® i2000 basic unit, Module TEC, charger, plastic carrying case

Model		No.
ROSCOPE® i2000 Module TEC	1	<b>1500000696</b>
Module TEC (without basic unit)	1	<b>69601</b>
Extension TEC 1.8 m	1	<b>1500000010</b>
Set (hook, magnet, mirror)	1	<b>69615</b>
Module 20/3	1	<b>69385</b>
Module Micro 5.5/1	1	<b>69376</b>

**22 m long cable!**



Inspection of rain downpipes



Inspection from floor drains



### ROSCOPE® i2000 Module 25/22

High-performance camera for the inspection of pipes from Ø 40 up to 100 mm.

#### Product Profile

##### KEY FEATURES

- Recording and playback of the inspection on video (AVI) or photo (JPEG)
- Extremely flexible camera head for 90° bends starting from Ø 40 mm

##### TECHNICAL DATA

<b>Display:</b>	3.5" Touchscreen (color) (technical data about basic unit available on page 192)
<b>Camera head:</b>	Ø 25 mm, waterproof, with 8 LED lights
<b>Brightness:</b>	100 LUX (0.5 m)
<b>Cable length:</b>	22 m
<b>Cable diameter:</b>	5.5 mm
<b>Power supply:</b>	Li-ion battery 3.7 V / 4.2 Ah
<b>Weight:</b>	3.1 kg

Scope of delivery ROSCOPE® i2000 Module 25/22 (No. 1000000860):  
ROSCOPE® i2000 basic unit, Module 25/22, Module TEC, charger, plastic carrying case

Model		No.
ROSCOPE® i2000 Module 25/22 + Module TEC	1	<b>1000000860</b>
1 Module 25/22 (without basic unit)	1	<b>69603</b>
Guide skid for Module 25/16 and 25/22	1	<b>74629</b>



# Inspection & Locating

## Video Inspection

### ROSCOPE® i2000 Module 25/16

High-performance camera for the inspection of pipes from Ø 50 up to 100 mm. With an integrated transmitter for the precise locating of the camera head.



#### Product Profile

##### KEY FEATURES

- Recording and playback of the inspection on video (AVI) or photo (JPEG)
- Extremely flexible camera head for 90° bends starting from Ø 50 mm
- Can be used with guide skid up to Ø 100 mm
- Self-leveling picture
- Integrated transmitter for the precise locating of the camera head
- ROSCOPE® i2000 basic unit can also be used as control unit for the ROLOC PLUS locating module

##### TECHNICAL DATA

<b>Display:</b>	3.5" Touchscreen (color) (technical data about basic unit available on page 192)
<b>Camera head:</b>	Ø 25 mm, <b>self-leveling</b> and waterproof, with 4 extra bright LED lights
<b>Brightness:</b>	125 LUX (0.5 m)
<b>Cable length:</b>	16 m
<b>Cable diameter:</b>	8.5 mm
<b>Frequency:</b>	512 Hz
<b>Power supply:</b>	Li-ion battery 3.7 V / 4.2 Ah, 2 AA batteries (transmitter)
<b>Weight:</b>	3.9 kg

**Simple locating of the camera head with the integrated transmitter!**

#### WiFi

Easy data transfer to mobile devices

#### Integrated transmitter

For the precise locating of the camera head

#### Self-leveling camera head

Picture is always upright, no loss of orientation

#### 3.5" Touchscreen

640 x 480 pixel resolution (JPEG)

#### Battery compartment

For the power supply of the integrated transmitter (2 AA batteries included in delivery)

#### Rubberized base

Stable stand without slipping and damaging the surface

#### Inspection of access line



#### Inspection of rain drainpipes



#### Guide skid for Module 25/16 and 25/22

For centring of the camera head, better illumination of the pipe



No. 74629

Scope of delivery ROSCOPE® i2000 Module 25/16 (No. 100000842): ROSCOPE® i2000 basic unit, Module 25/16, Module TEC, charger, plastic carrying case

Model		No.
ROSCOPE® i2000 Module 25/16 + Module TEC	1	<b>100000842</b>
Module 25/16 (without basic unit)	1	<b>150000052</b>
Guide skid for Module 25/16 and 25/22	1	<b>74629</b>

### ROSCOPE® i2000 Module ROLOC PLUS

Easy to use pipe and sonde locating device. Available as a complete unit, as well as locating module for the ROSCOPE® i2000 Basic unit

#### Product Profile

##### KEY FEATURES

- Pin-point location of the sonde
- Precise depth measurement
- Different frequencies can be chosen
- Simple and clear menu design guides step-by-step through the locating process
- Telescopic function makes transporting in case easier

##### TECHNICAL DATA

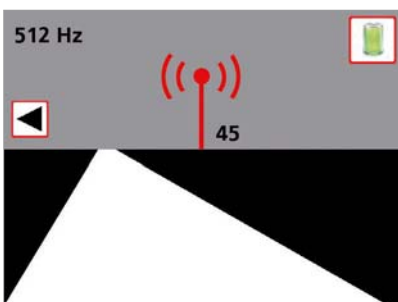
<b>Display:</b>	3.5" Touchscreen (color) (technical data about basic unit available on page 188)
<b>Frequencies:</b>	512 and 650 Hz, 33 kHz active/passive, 50/60 Hz passive
<b>Power supply:</b>	Li-ion battery 3.7 V / 4.2 Ah
<b>Dimensions:</b>	95 x 32 x 30 cm (operating mode) 67 x 32 x 9 (transportation mode)
<b>Weight:</b>	1.4 kg



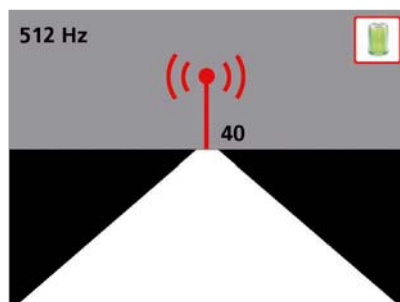
Scope of delivery ROSCOPE® i2000 Module ROLOC PLUS (No. 100000065): ROSCOPE® i2000 basic unit, Module ROLOC PLUS; Module TEC, charger, plastic carrying case

Model	☞	No.
ROSCOPE® i2000 Module ROLOC PLUS + Module TEC	1	<b>1000000861</b>
Module ROLOC PLUS (without basic unit i2000)	1	<b>1500000057</b>

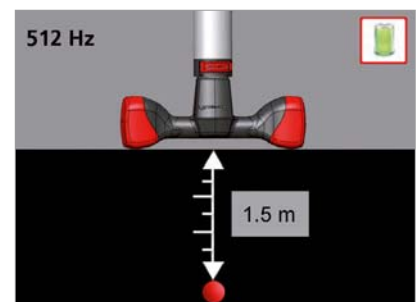
Target is right of the running direction. Correction of your direction to the right is necessary



Target is in the running direction. No correction is necessary



Depth measurement with a push of the button



Locating module is included with the ROSCOPE® i2000 basic unit!

Also for use with ROCAM® 3 multimedia

Simple menu guidance

Guides step-by-step to targeted position



Multi-frequencies

Locating of the most common camera heads

Telescopic function

For easier transport in case

Depth measurement

Pin-point location of the transmitter position

7



# Inspection & Locating

## Video Inspection

### ROCAM® 3 Multimedia

Inspection camera for pipes from Ø 70 up to 150 mm and/or from Ø 150 up to 300 mm. With integrated transmitter for the precise locating of the camera head

#### Product Profile

##### KEY FEATURES

- Removable monitor unit for working in confined spaces
- Recording of photos and videos
- Protocol file
- Data recording with the keyboard
- Audio commentary of the inspection is possible
- Precise determination of the camera head distance with the digital meter counter fade-in on display

##### TECHNICAL DATA

<b>Display:</b>	10.4" TFT LCD colour display, removable
<b>Camera head:</b>	Ø 30 mm (standard) with 25 LED lights, Ø 40 mm (optional) with 36 LED lights, <b>self-leveling</b> and waterproof
<b>Brightness:</b>	175 LUX (0.5 m), camera head Ø 30 mm 666 LUX (0.5 m), camera head Ø 40 mm
<b>Cable length:</b>	30 m
<b>Cable diameter:</b>	7 mm
<b>Power supply:</b>	NiMH battery 12 V / 6 Ah
<b>Weight:</b>	18 kg

**Simple locating of the camera head with the integrated transmitter!**

#### Protection against splash water (IP65)

For use in wet, dirty surroundings and easy, fast cleaning

#### Removable control unit with 10.4" TFT LCD colour display

Simple use in hard to reach places

#### Recording of photos and videos

Simple documentation of the inspection on a USB stick

#### Digital meter count fade-in

Precise determination of the camera head distance

#### Strong push cable Ø 7 mm, 30 m long

Precise and reliable camera guidance in pipe and duct



#### Integrated transmitter

For the precise locating of the camera head

#### Mechanical self-leveling of the picture

Picture is always upright, no loss of orientation

#### Exchangeable head system

Universal connection for attaching various camera heads

Model	No.
ROCAM® 3 Multimedia 30 mm	1500000118
ROCAM® 3 Multimedia 40 mm	1500000276

### Removable control unit

#### Makes working in tight spaces easier

- The camera base does not need to be near the user since all of the control elements such as recording, playback or LED regulation are integrated in the compact control unit
- Photos and videos of the inspection can be saved on the USB stick and immediately played back with just a push of a button
- The 10.4" TFT LCD colour display offers optimum conditions for a quick and simple analysis of the observations

ROCAM® 3 Multimedia with removable control unit



### ROCAM® Camera Heads

Camera heads made of high-quality materials for professional inspection of pipes from Ø 70 up to 300 mm

#### Product Profile

##### KEY FEATURES

###### Excellent brightness:

- The ROCAM® camera head Ø 30 mm has over 25 ultra bright LED lights, that effortlessly illuminate pipes up to Ø 150
- The camera head can be mounted with a Ø 40 mm camera head for larger pipe diameters

###### Pressure tight screw slip-ring connection:

- Pressure tight connection (3 bar) between camera head and push cable
- High resistance to shock and impact
- Quick and toolless exchange of the camera heads
- No burden from electrical connections

###### High flexibility and resistant:

- Flexible spring provides 90° curveability in pipes up to Ø 70 mm when enough stability is provided
- Pressure tight up to 3 bar with the stainless steel casing
- Scratch and impact resistant with the sapphire glass objective

##### KEY FEATURES

###### Mountable transmitter:

- Optional 33 kHz transmitter can be used to determine the length of the camera head (90° from Ø 70)
- In small pipe diameters the transmitter can also be used without the camera head to determine the course of the pipe without a visual inspection

##### TECHNICAL DATA

<b>Camera head:</b>	Ø 30 mm with 25 LED lights Ø 40 mm with 36 LED lights <b>self-leveling</b> and waterproof
<b>Brightness:</b>	175 LUX (0.5 m), camera head Ø 30 mm 666 LUX (0.5 m), camera head Ø 40 mm

7



Model	No.
Camera head Ø 30 mm	1500000123
Camera head Ø 40 mm	1500000122

Always an upright picture!

Excellent illumination



Pressure tight screw slip-ring connection



High flexibility and durability



Mountable transmitter



# Inspection & Locating

## Video Inspection

### ROCAM® Plus

Inspection camera with battery and mains operation for pipes from Ø 25 up to 300 mm



#### Product Profile

##### APPLICATION AREA

Camera system for cost-effective inspection and damage analysis over long distances with self-leveling camera head and optional data archiving per ATV

##### KEY FEATURES

- Powerful, self-leveling camera head
- Precise and reliable guidance of the camera in pipe and drains
- Curve flexibility 90° starting from 40 mm with the Mini Module 1.4 (as standard included)
- Conserves battery: saves energy with the automatic shut-off
- Mobile and battery operation up to 2.5 hours, 12 V adaptor with on-board charger
- Precise determination of the camera head distance with the digital meter count fade-in on display
- Excellent contrast and sharp, continuously adjustable light intensity of the diodes

##### KEY FEATURES

- For the documentation of the inspection on video
- Direct data exchange with laptop / PC, etc., possible

##### TECHNICAL DATA

<b>Display:</b>	5.6" TFT LCD colour display
<b>Camera head:</b>	Ø 40 mm, <b>self-leveling</b> and waterproof, with 35 LED lights
<b>Brightness:</b>	666 LUX (0.5 m)
<b>Cable length:</b>	60 or 100 m
<b>Cable diameter:</b>	7.5 mm
<b>Frequency:</b>	33 kHz (optional)
<b>Power supply:</b>	NiMH battery 12 V / 3 Ah or Mains operation 100-240 V / 50-60 Hz starting at 20 kg
<b>Weight:</b>	

#### Duo-Power

Portable and mobile operation up to 2.5 hours. 12 V adaptor for on-board charger

#### Automatic shut-off when the hub is closed

Conserves battery and saves energy

#### Mini Module 1.4, 5 m long

Curve flexibility 90° starting from Ø 40 mm

#### Strong push cable 60 or 100 m long

Precise and reliable guidance of the camera in pipe and drains, even over long distances

#### Self-leveling camera head

Picture is always upright, no loss of orientation

#### TFT LCD colour display

Excellent contrast and sharpness

#### Digital meter count fade-in

Precise determination of the camera head distance

#### Video In / Video Out

For the documentation of the inspection on video. On laptop / PC with accessory No. 1000000082

#### COM port / RS232

Direct data exchange with laptop / PC, etc., possible



\*69740 and 69840

Model	Description	kg		No.
ROCAM® Plus with meter counter	60 m cable length	20	1	<b>69725</b>
ROCAM® Plus with meter counter	60 m cable length, with PC keyboard and professional drain software	21	1	<b>69740</b>
ROCAM® Plus with meter counter	100 m cable length	25	1	<b>69825</b>
ROCAM® Plus with meter counter	100 m cable length, with PC keyboard and professional drain software	26	1	<b>69840</b>

**Rolling Skids**

Recommended for distances from 30 m

**APPLICATION AREA**

Rolling skids RS40/150 for pipe diameters Ø 150 - 200 mm  
Rolling skids RS40/200 for pipe diameters Ø 200 - 300 mm

**KEY FEATURES**

- Optimized view of the pipe section
- Less pushing resistance with the fully rubberized wheels



No. 69118

No. 69119

Model			No.
<b>For camera heads Ø 40 mm:</b>			
Rolling skids Ø 150 mm	700	1	<b>69118</b>
Rolling skids Ø 200 mm	700	1	<b>69119</b>

**Brush Attachments**

To improve the overview in pipes from Ø 100 – 200 mm

**APPLICATION AREA**

Brush attachment Ø 100 for use in pipe Ø 100 - 150 mm  
Brush attachment Ø 150 for use in pipe Ø 150 - 200 mm

**KEY FEATURES**

- Optimized view of the pipe section through centring in the pipe
- Dirt will not accumulate in front of the lens
- Good curveability with the brush flexibility



Brush attachment spiral feather (rear)

Brush attachment camera head (front)

\*Use with guide skid No. 69112 / 1500000817

Model			No.
Brush attachment Ø 100*	200	1	<b>69113</b>
Brush attachment Ø 150*	300	1	<b>69117</b>

**Rolling Skids ROCAM® 3 Multimedia and ROCAM® Plus**

For centring of the camera head in pipes for a better overview and illumination

**APPLICATION AREA**

Guide skid for pipe diameters Ø 70 - 150 mm  
Guide skid with brush attachment for pipe diameters Ø 70 - 200 mm

**KEY FEATURES**

- Optimized view of the pipe section through centring in the pipe
- Dirt will not accumulate in front of the lens



No. 69112 / 1500000817



No. 69111 / 1500000120

Model			No.
<b>For camera heads Ø 30 mm:</b>			
Guide skid for Ø 150 mm	200	1	<b>1500000120</b>
Guide skid for brush attachments	200	1	<b>1500000817</b>
<b>For camera heads Ø 40 mm:</b>			
Guide skid for Ø 200 mm	200	1	<b>69111</b>
Guide skid for brush attachments	200	1	<b>69112</b>

**Battery and Charger ROCAM® 3 Multimedia and ROCAM® Plus**

**KEY FEATURES**

- Extend the mobile operation spare battery
- No unintentional release of the battery, battery lock with click mechanism
- External battery charger, independent charging of the battery, higher mobility

**TECHNICAL DATA**

**Battery:** 12 V / 3 or 6 Ah NiMH  
**Running time:** up to 2.5 hours  
**Charger / charging time:** 12 V / 1-1.5 Std.



No. 69570



No. 69575

Model			No.
ROCAM® Plus NiMH battery 12 V / 3 Ah	800	1	<b>69570</b>
ROCAM® Plus charger 12 V	750	1	<b>69575</b>
ROCAM® 3 M. NiMH battery 12 V / 6 Ah	800	1	<b>1500000121</b>

