

BLACK+DECKER

PRODUCT CATALOGUE 2014

**BLACK+
DECKER**



Find us on  www.facebook.com/BlackandDeckerIndia

Follow us on  @BlackandDeckerIndia

Stanley Black & Decker india Limited

No.28 "Akemps", 3rd Main, 1st Cross, Ashwini Layout,
Koramangala Intermediate Ring Road, Bangalore - 560 047.
Tel: +91 80 66608800 Fax: +91 80 66608828.

Toll Free No. 1860 - 425 - 1111

Website : www.stanleyblackanddeckerindia.in
www.blackanddeckerindia.in

Sales Offices:

Bangalore: +91 80 41643711 Chennai: +91 44 42033727

Delhi: +91 11 23766980 Jaipur: +91 9694064222

Mumbai: +91 22 67973977 Cochin: +91 9895301967.

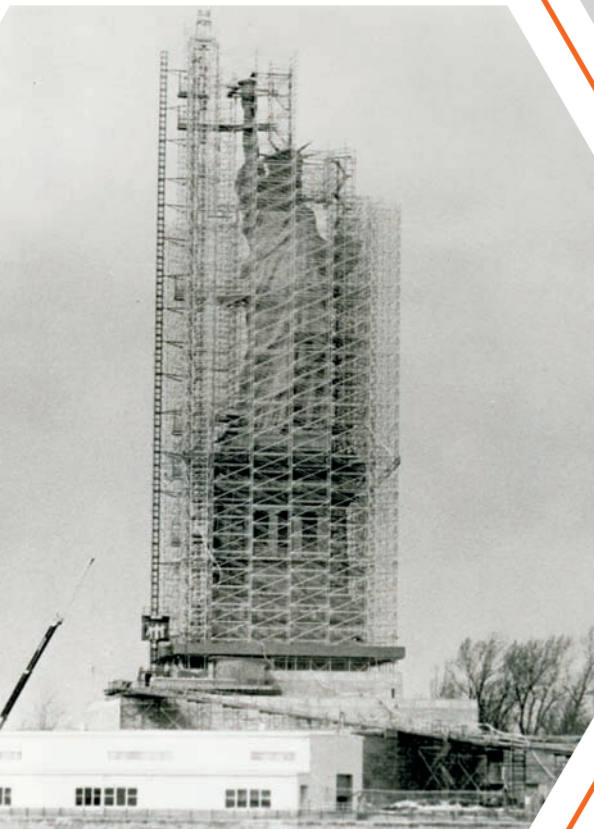




1910 - Original Plant in Baltimore

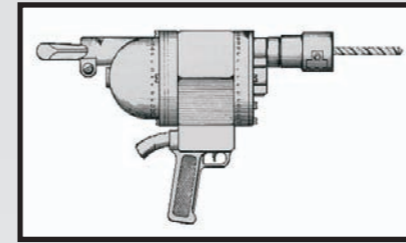


1951 - 100th Million Drill



1984 - Statue of Liberty

1st PORTABLE DRILL



1914 PATENTED
THE WORLD'S FIRST PISTOL DRILL

DEMONSTRATIONS



1925

FLYING SHOWROOM



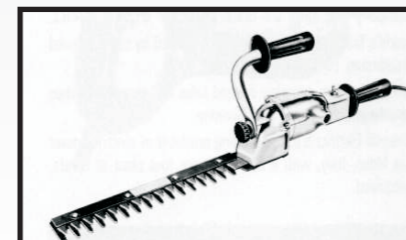
1929

PORTABILITY



1946 - World's 1st Consumer Drill

GARDENING



1957 - PORTABLE
ELECTRIC HEDGE TRIMMER

In 1909, two young entrepreneurs, S. Duncan Black and Alonzo G. Decker, founded a small machine shop in Baltimore, Maryland, USA. They called it 'Black & Decker Manufacturing Company'. Today, the shop is worth billions of dollars and much more than was ever imagined. Black & Decker emerged as a global marketer and manufacturer of quality products used in and around the home.

As a market driven company, Black & Decker is committed to building strong partnerships through end-user focus, customer satisfaction and continuous system enhancement to bring to the consumer the latest products of the highest quality. Black & Decker re-affirms its commitment through a full two-year warranty across all home products. A wide network of well-equipped and trained service centres backs this unique warranty across the world.

N.A.S.A.



1969
First drill on the moon



CONCRETE WORKING

HD400 - 10mm Hammer Drill

NEW



Specifications	
Power Input	500 W
Chuck Size	10 mm
Speed	2,800 rpm
Impact Rate	47,600 bpm
Max Drill Capacity	
Wood	20 mm
Steel	10 mm
Masonry	10 mm



Hammer Drill

KR504RE - 10mm Hammer Drill



Specifications	
Power Input	500 W
Chuck Size	10 mm
Speed	0-2,800 rpm
Impact Rate	0-47,600 bpm
Max Drill Capacity	
Wood	20 mm
Steel	10 mm
Masonry	10 mm



Hammer Drill

KR554RE - 13mm Hammer Drill



Specifications	
Power Input	550 W
Chuck Size	13 mm
Speed	0-2,800 rpm
Impact Rate	0-47,600 bpm
Max Drill Capacity	
Wood	20 mm
Steel	13 mm
Masonry	13 mm



Hammer Drill

KR704REK - 13mm Hammer Drill



Specifications	
Power Input	710 W
Chuck Size	13 mm
Speed	0-2,800 rpm
Impact Rate	0-47,600 bpm
Max Drill Capacity	
Wood	20 mm
Steel	13 mm
Masonry	13 mm



Hammer Drill

KRP12 - 10mm Hammer Drill with Kit



Accessories			
KR504RE	1 No.	Utility Knife	1 No.
12oz. Hammer Wrench	1 No.	Brad Point Drill Bits- 6, 8mm	1 Each
Combination Wrench- 8, 10, 11, 12, 13mm	1Each	HSS Drill Bits-4, 5, 6, 8mm	1 Each
6" Regular Pliers	1 No.	Masonry Drill Bits-5, 6, 8, 10mm	1Each
Allen Keys-2, 3, 4, 5mm	1Each	Magnetic Bit Tip Holder	1No.
6" Long Nose Pliers	1 No.	50mm Power Bits	1 No.
Spade Bits-20, 25mm	1Each	PZ2 (x2), PH2 (x2), SL6 (x2)	1Each



Hammer Drill Kit with Accessories



METAL WORKING

G720R - 100mm Small Angle Grinder

NEW



Specifications

Power Input	820 W
Speed	11,000 rpm
Spindle Size	M 10
Spindle Lock	Yes
Lock on/off Switch	Yes
Switch Type	Slider
Configuration	Body Grip



Small Angle Grinder

KG70 / 75 - 100mm/125mm Grinder



Specifications

Power Input	700 W
Speed	10,000 rpm
Max. Wheel Dia.	100 / 125 mm
Spin	M10 / M14



Small Angle Grinder

EPC12K2 - 10mm Cordless Drill/Driver



Specifications

Voltage	12 V
Bat.Type/ Amps	NiCd/ 1.2 Ah
Charging Time	3 hrs
Speed	0-750 rpm
Max. Torque	11Nm
Max. Drill Capacity	
Wood	25 mm
Steel	10 mm



Cordless Drill/Driver

CD121K50 - 12V Cordless Drill/Driver Kit



NEW

Specifications

Voltage	12 V
Bat.Type/ Amps	Ni Cd/ 1.1 Ah
Charging Time	3 hrs
Speed	0-1200 rpm
Max. Drill Capacity	
Wood	15 mm
Steel	10 mm



Cordless Drill/Driver

A7073 - Alkaline Battery Powered Screwdriver



Specifications

Voltage	6 V
Battery Type	Alkaline

Contents

Single ended bit 14 pieces
AA Alkaline batteries 4 pieces



Cordless Screwdriver

DP240 - Direct Plug Screwdriver



Specifications

Voltage	2.4 V
Battery Type	Ni Cd
Charge time	12 hr
Reverse	Yes
Spindle lock	Manual
Max Torque	3.0 Nm
Speed	150
No load speed	150 rpm



Direct Plug Screwdriver

CORDLESS



WOOD WORKING

CS1500 - 185mm Circular Saw



Specifications

Power Input	1500 W
Speed	Variable
Depth of Cut	63mm
Blade Size	185 x 20mm
Bevel Cut	0-45°
TCT Blade	40T X 2



Circular Saw

KS600E - Variable Speed Jigsaw



Specifications

Power Input	450 W
Strokes per min.	0-3,000 spm
Depth of Cut	
Wood	60 mm
Steel	5 mm
Aluminium	10 mm
Bevel Cut	0-45°
Pendulum	No



Variable Speed Jigsaw

KS700PE -Variable Speed Pendulum Jigsaw



Specifications

Power Input	480 W
Strokes per min.	0-3,000 spm
Depth of Cut	
Wood	60 mm
Steel	5 mm
Aluminium	10 mm
Bevel Cut	0-45°
Pendulum Action	Yes



Pendulum Jigsaw

KS900EKX - Pendulum Jigsaw with Kit



Specifications

Power Input	600 W
Strokes	800-3000 / min
Depth of Cut	
Wood	85mm
Steel	5mm
Aluminium	10mm
Soft Grip	Yes
Speed	Variable
Free Blades	3 + 10



Pendulum Jigsaw

KW900EKA - Plunge Router



Specifications

Power Input	1200 W
Variable Speed	8,000-28,000 rpm
Plunge Depth	55 mm
Max. Cutter Dia.	38 mm
Collet Size	6, 6.35, 8 mm



Plunge Router

KW712 - Rebating Planer



Specifications

Power Input	650 W
Speed	17,000 rpm
Depth of Cut	0-2 mm
Width of Cut	82 mm
Planing Width	82 mm
Rebating Depth	8 mm
Blade Type	TC Reversible Blade



Rebating Planer

KA400 - 1/4" Sheet Sander



Specifications

Power Input	220 W
Speed	15,000 opm
Excentricity	0.8 mm
Orbit Dia.	1.6 mm
Paper Size	114 x 114 mm
Platen Size	113.5 x 109 mm
Dust Extraction	Dust Bag



Sheet Sander

SPECIALTIES



KTX4000 - 450W Blower



Specifications

Power Input	450 W
No load Speed	14500 rpm
Air Volume	2.5m ³ / min
Cord Length	3 M



Variable Speed Blower

KX1800 - 1800 W Heat Gun



Specifications

Power Input	1800 W
Voltage	220-240 V
Style	Pistol
Two Heat Setting	300°/ 580° C
Airflow	500/ 650 L/min.
Cable Length	2 M



Heat Gun

KP1200 - Car Polisher



Specifications

Power Input	120 W
No Load Speed	3200 / min
Polishing Motion	Random Orbit
Platen Dia.	255mm / 10"
Cable Length	2 M
Source	GPA
Net Weight	2.8 kg



Car Polisher

INTRODUCING..

**PRO
LINE**

BLACK&DECKER®

The distinctive high performance "PRO LINE" range now allows the tradesmen to enjoy the performance and specification benefits previously only experienced by professionals – and more affordably too!



ENGINEERED FOR THE TRADE